

# Deep observations of CO line emission from star-forming galaxies in a cluster candidate at $z = 1.5$

---

Aravena, M.; Carilli, C. L.; Salvato, M.; Tanaka, M.; Lentati, L.; Schinnerer, E.; Walter, F.; Riechers, D.; Smolčić, Vernesa; Capak, P.; ...

Source / Izvornik: **Monthly Notices of the Royal Astronomical Society, 2012, 426, 258 - 275**

Journal article, Published version

Rad u časopisu, Objavljena verzija rada (izdavačev PDF)

<https://doi.org/10.1111/j.1365-2966.2012.21697.x>

Permanent link / Trajna poveznica: <https://urn.nsk.hr/urn:nbn:hr:217:113822>

Rights / Prava: [In copyright](#) / [Zaštićeno autorskim pravom.](#)

Download date / Datum preuzimanja: **2024-05-27**



Repository / Repozitorij:

[Repository of the Faculty of Science - University of Zagreb](#)



# Deep observations of CO line emission from star-forming galaxies in a cluster candidate at $z = 1.5$

M. Aravena,<sup>1\*</sup> C. L. Carilli,<sup>2</sup> M. Salvato,<sup>3</sup> M. Tanaka,<sup>4</sup> L. Lentati,<sup>5</sup> E. Schinnerer,<sup>6</sup> F. Walter,<sup>6</sup> D. Riechers,<sup>7</sup> V. Smolčić,<sup>8,9,10</sup> P. Capak,<sup>7</sup> H. Aussel,<sup>11</sup> F. Bertoldi,<sup>9</sup> S. C. Chapman,<sup>12</sup> D. Farrah,<sup>13,14</sup> A. Finoguenov,<sup>15</sup> E. Le Floch,<sup>11</sup> D. Lutz,<sup>15</sup> G. Magdis,<sup>16</sup> S. Oliver,<sup>13</sup> L. Riguccini,<sup>17</sup> S. Berta,<sup>15</sup> B. Magnelli<sup>15</sup> and F. Pozzi<sup>18,19</sup>

<sup>1</sup>European Southern Observatory, Alonso de Córdoba 3107, Vitacura, Santiago, Chile

<sup>2</sup>National Radio Astronomy Observatory, 1003 Lopezville Rd., Socorro, NM 87801, USA

<sup>3</sup>Max-Planck Institut für Plasma Physik, Boltzmannstr. 2, D-85748, Garching b. München, Germany

<sup>4</sup>Institute for the Physics and Mathematics of the Universe, University of Tokyo, 5-1-5 Kashiwanoha Kashiwashi Chiba 277-8583, Japan

<sup>5</sup>Cavendish Laboratory, University of Cambridge, J. J. Thompson Ave., Cambridge CB3 0HE

<sup>6</sup>Max-Planck Institut für Astronomie, Königstuhl 17, D-69117 Heidelberg, Germany

<sup>7</sup>California Institute of Technology, MC 249-17, 1200 East California Boulevard, Pasadena, CA 91125, USA

<sup>8</sup>European Southern Observatory, Karl-Schwarzschild-Strasse 2, D-85748 Garching b. München, Germany

<sup>9</sup>Argelander Institute for Astronomy, Auf dem Hügel 71, D-53121 Bonn, Germany

<sup>10</sup>Physics Department, University of Zagreb, Bijenička cesta 32, 10002 Zagreb, Croatia

<sup>11</sup>CNRS/Service d'Astrophysique, Bat 709 CEA-Saclay, Orme de Merisiers, F91 191 Gif-sur-Yvette, France

<sup>12</sup>Institute of Astronomy, University of Cambridge, Madingley Road, Cambridge CB3 0HA

<sup>13</sup>Department of Physics and Astronomy, University of Sussex, Falmer, Brighton BN1 9QH

<sup>14</sup>Department of Physics, Virginia Tech, Blacksburg, VA 24061, USA

<sup>15</sup>Max-Planck-Institut für Extraterrestrische Physik, Giessenbachstraße D-85748, Garching b. München, Germany

<sup>16</sup>Department of Physics, University of Oxford, Denys Wilkinson Building, Keble Road, Oxford OX1 3RH

<sup>17</sup>Research Center for Space and Cosmic Evolution, Ehime University, Bunkyo-cho, Matsuyama 790-8577, Japan

<sup>18</sup>Dipartimento di Astronomia, Università degli Studi di Bologna, Via Ranzani 1, I-40127 Bologna, Italy

<sup>19</sup>INAF – Osservatorio Astronomico di Bologna, Via Ranzani 1, I-40127 Bologna, Italy

Accepted 2012 July 10. Received 2012 May 30; in original form 2012 April 8

## ABSTRACT

We report results from a deep Jansky Very Large Array (JVLA) search for  $^{12}\text{CO } J = 1-0$  line emission from galaxies in a candidate galaxy cluster at  $z \sim 1.55$  in the COSMOS field. We target four galaxies with optical spectroscopic redshifts in the range  $z = 1.47-1.59$ , consistent with the likely redshift for the candidate galaxy cluster. Two of these four galaxies, ID 51613 and ID 51813, are nominally detected in CO  $1-0$  line emission at the  $3-4\sigma$  level. We find CO luminosities of  $(2.42 \pm 0.58) \times 10^{10} \text{ K km s}^{-1} \text{ pc}^2$  and  $(1.26 \pm 0.38) \times 10^{10} \text{ K km s}^{-1} \text{ pc}^2$ , respectively. Taking advantage from the clustering and expanded 2-GHz bandwidth of the JVLA, we perform a search for emission lines in the proximity of optical sources within the field of view of our observations (60 arcsec). We limit our search to galaxies with  $K_s < 23.5$  (AB) and  $z_{\text{phot}} = 1.2-1.8$ . We find two bright optical galaxies, ID 51207 and ID 51380, to be associated with significant emission line peaks ( $>4\sigma$ ) in the data cube, which we identify with the CO  $1-0$  line emission. To test the reliability of the line peaks found, we performed a parallel search for line peaks using a Bayesian inference method. Both CO line emitting candidates are identified with probabilities of 13 per cent and 72 per cent that there are line emitting sources in each case, respectively. Monte Carlo simulations show that such associations are statistically significant, with probabilities of chance association of 3.5 per cent and 10.7 per cent for ID 51207 and ID 51380, respectively. Modelling of their optical/IR spectral energy distributions

\*E-mail: maravena@eso.org

indicates that the CO detected galaxies and candidates have stellar masses and star formation rates in the range  $(0.3\text{--}1.1) \times 10^{11} M_{\odot}$  and  $60\text{--}160 M_{\odot} \text{ yr}^{-1}$ , with star formation efficiencies comparable to that found in other star-forming galaxies at similar redshifts. By comparing the space density of CO emitters derived from our observations with the space density derived from previous CO detections at  $z \sim 1.5$ , and with semi-analytic predictions for the CO luminosity function, we suggest that the latter tend to underestimate the number of CO galaxies detected at high redshift. Finally, we argue about the benefits of future searches for molecular gas line emission in clustered fields with upcoming submillimetre/radio facilities.

**Key words:** galaxies: clusters: general – galaxies: high-redshift – galaxies: ISM.

## 1 INTRODUCTION

One of the major goals of modern observational cosmology is to understand how the gas in the diffuse interstellar medium (ISM) of galaxies converts into stars and how both phases evolve with cosmic time. A major advance has been the determination of the evolution of the star formation rate (SFR) density of the Universe. Deep optical and radio surveys indicated that the SFR density steadily increases from  $z = 5$ , with a peak at  $z \sim 3\text{--}1$ , and steeply declines from  $z = 1$  to the present (e.g. Lilly et al. 1996; Madau et al. 1996; Cowie, Songaila & Barger 1999; Steidel et al. 1999; Giavalisco et al. 2004; Ouchi et al. 2004; Bouwens et al. 2007; Smolčić et al. 2009). Although the contribution from luminous, merger-driven starburst galaxies at high redshift to the SFR density appears to be significant, the population that drives such evolution appears to be formed by more quiescent massive star-forming galaxies (Daddi et al. 2007; Rodighiero et al. 2011). The close relationship between the SFR and the amount of molecular gas in galaxies, from which stars form, suggests that the evolution of the SFR density is the result of the evolution of the molecular gas density in galaxies across cosmic times.

Measuring the evolution of this molecular gas density is thus critical to understand the formation of molecular gas and stars in galaxies. For this, it is necessary to perform blind surveys of the sky that allow us to measure the molecular gas content in a CO flux limited sample as a function of redshift and luminosity (e.g. observations in the local Universe and simulations by Keres, Yun & Young 2003; Obreschkow & Rawlings 2009; Obreschkow et al. 2009). The technical limitations (e.g. bandwidth, sensitivity) of current submillimetre and radio facilities, along with the intrinsic faintness of the CO emission lines used to measure the amount of molecular gas in galaxies, have, however, precluded such studies. The advent of sensitive interferometers such as the Jansky Very Large Array (JVLA; Perley et al. 2011) and the Atacama Large Millimetre Array (ALMA; Wootten & Thompson 2009) will make these studies possible.

A huge step towards this goal has been the recent detection of significant CO line emission in massive star-forming galaxies at high redshift (Daddi et al. 2008, 2010a; Tacconi et al. 2010; Geach et al. 2011). The large molecular gas masses derived are comparable to that observed in submillimetre galaxies (SMGs), in the range  $\sim 10^{10\text{--}11} M_{\odot}$ , however these galaxies are forming stars at approximately five to 10 times lower rates, with typical SFRs in the range  $\sim 50\text{--}300 M_{\odot} \text{ yr}^{-1}$ . These findings imply that they have low star formation efficiencies (SFEs) and thus consume the gas at longer time-scales, in agreement with their long duty cycle times of  $>0.5$

Gyr (Daddi et al. 2007). From the analysis of the CO molecular gas and H $\alpha$  ionized gas kinematics, it is expected that between 1/3 and 2/3 of the star-forming galaxies at  $z \sim 2$  are consistent with rotating discs (Förster Schreiber et al. 2009; Tacconi et al. 2010), and suggest that the dominant mechanism to cool gas into molecular clouds is driven by cold gas accretion rather than galaxy interactions (Kereš et al. 2005; Dekel et al. 2009). Follow-up multi-transition CO observations recently discovered that a cold gas component, with gas excitation conditions similar to that seen in local spiral galaxies, is present in these objects (Dannerbauer et al. 2009; Aravena et al. 2010). Remarkably, observations at  $z = 0$ ,  $z = 0.5$  and  $z = 1\text{--}2$  suggest that there has been a strong evolution in the molecular gas fractions in star-forming galaxies over the past 10 Gyr (Tacconi et al. 2010; Geach et al. 2011; Lagos et al. 2011).

In this paper, we present results of a deep search for CO molecular gas from galaxies that are part of a candidate galaxy cluster at  $z \sim 1.5$  with the JVLA. The scope of this paper is to perform the first attempt to conduct an efficient blind search for CO emission from galaxies located in a part of the sky that likely contains a higher than average number of CO emitters. The clustering of galaxies in angular scales and along the line of sight makes it possible to effectively increase the number of galaxies observed within a single pointing and frequency tuning with the JVLA. We use the extensive multi-wavelength data set available for the COSMOS field, including the accurate photometric redshifts, to inform the location of optical galaxies and to guide the search for CO emission. In Section 2, we present the properties of the (overdense) target field and the details of the JVLA observations. In Section 3, we present the main results from this paper. We report the detection of CO 1–0 emission in two spectroscopically confirmed galaxies and analyse the 45.5 GHz continuum emission and properties of a spectroscopically confirmed radio-loud galaxy. In Sections 3.3 and 3.4, we present the search for line emission peaks from optical galaxies in the field. Significant line peaks associated with optical sources that have compatible photometric redshifts are identified as CO line candidates. The line search is performed using two different algorithms. From Sections 3.5 to 3.7, we analyse the likelihood that such associations are real based on both a statistical approach and the detection of the CO candidates in the IR wavelength regime. In Section 4, we discuss the derived SFEs for the two CO detected spectroscopically confirmed galaxies and for the two CO candidate emitters, as well as the implications of these results for future experiments to measure the CO source counts at high redshift. We adopt a concordance  $\Lambda$  cold dark matter cosmology throughout, with  $H_0 = 71 \text{ km s}^{-1} \text{ Mpc}^{-1}$ ,  $\Omega_M = 0.27$  and  $\Omega_{\Lambda} = 0.73$  (Spergel et al. 2007).

## 2 OBSERVATIONS

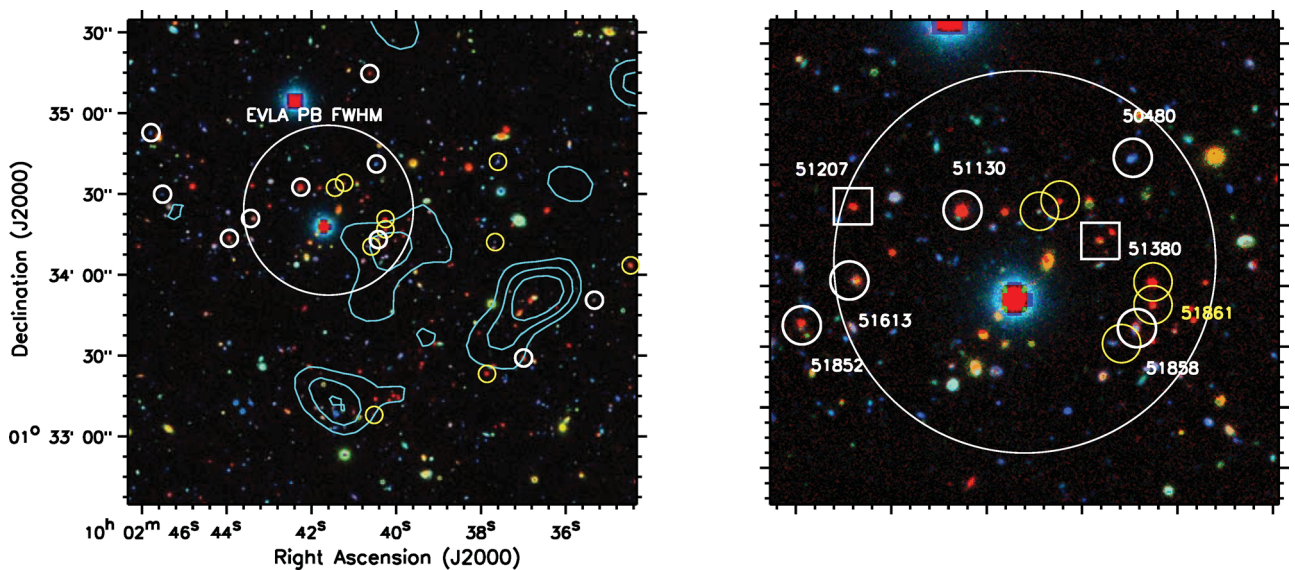
### 2.1 The COSMOS field

COSMOS is the largest deep survey carried out with the *Hubble Space Telescope* covering  $\sim 2 \text{ deg}^2$  in the sky (Scoville et al. 2007). Extensive imaging of the COSMOS field has been performed from the X-rays to the radio wavelengths. This includes complete optical/near-IR coverage in broad and intermediate bands with several ground-based observatories including the Subaru telescope, the Canada–France–Hawaii Telescope (CFHT), the United Kingdom Infrared Telescope (UKIRT) and the Kitt-Peak National Observatory (KPNO); IR imaging with the Infrared Array Camera (IRAC) and the Multiband Imaging Photometer for *Spitzer* (MIPS) on board of the *Spitzer Space Telescope*; and radio imaging with the VLA at 20 cm. Deep imaging at far-IR wavelengths with the *Herschel* Space Observatory has been obtained as part of the Photodetector Array Camera and Spectrometer (PACS) Evolutionary Probe (PEP) and the *Herschel* Multi-tiered Extragalactic Survey (HERMES) programmes (Oliver et al. 2010; Lutz et al. 2011). This has been complemented by an intensive spectroscopic campaign with ground-based observatories as part of the zCOSMOS survey (Lilly et al. 2007, 2009). From the rich multi-wavelength imaging, accurate photometric redshifts were computed using 31 UV/optical/IR bands (Ilbert et al. 2009; Salvato et al. 2009, 2011). These reach uncertainties of  $\delta z \sim 0.2\text{--}0.3$  at  $z \sim 1.5$  (see below). For details of the optical/IR imaging and catalogues of the COSMOS field, see Capak et al. (2007) and Ilbert et al. (2009). The 1.4 GHz radio observations in this region of the COSMOS field reach an rms level of  $30 \mu\text{Jy beam}^{-1}$ , and hence only sources with fluxes  $> 100 \mu\text{Jy beam}^{-1}$  can be reliably detected. A complete description of the radio imaging is given in Schinnerer et al. (2007), Bondi et al. (2008) and Schinnerer et al. (2010). The targeted region lies right outside the region of the COSMOS field defined by the *Hubble Space Telescope* imaging coverage, and therefore it is not covered by Advanced Camera for Surveys (ACS) F814W band imaging. Hence studies of the optical morphologies of galaxies are not possible.

### 2.2 Our target: discovery of a candidate galaxy cluster at $z \sim 1.5$ with the red-sequence technique

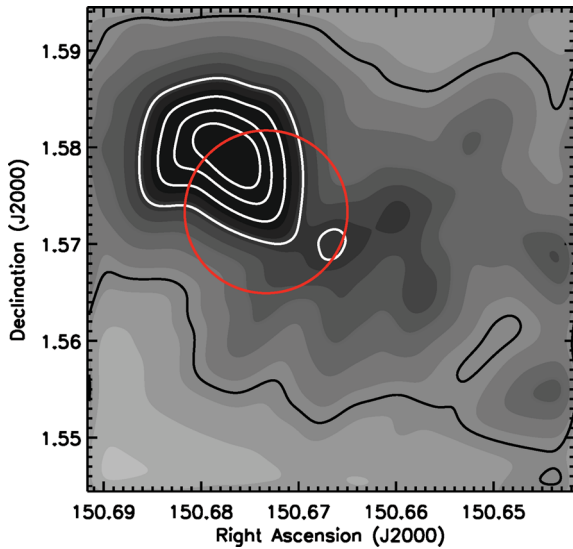
In this section, we present the identification of a substantial candidate galaxy cluster at  $z \sim 1.55$  based on four pieces of evidence: (i) the detection of a significant (seven times) overdensity of galaxies with photometric redshifts  $z = 1.5\text{--}1.6$ ; (ii) the tentative detection of X-ray emission; (iii) the formation of a red sequence of a few passive galaxies in the field and (iv) the existence of a radio-loud galaxy with a confirmed spectroscopic redshift consistent with the redshift of the overdensity. We remark that regardless of whether this constitutes a virialized structure (e.g. a galaxy cluster) or not, the overdensity of galaxies within a confined redshift range allowed us to observe the CO emission from four spectroscopically confirmed massive galaxies in that redshift range (Fig. 1), and to search for blind CO line detections from optical galaxies in the field.

Accurate photometric redshifts computed with 31 bands indicate that 26 galaxies with  $K < 23 \text{ mag}$  (AB) and within  $\sim 3$  arcmin from the central X-ray position (see below) have  $z_{\text{phot}} = 1.5\text{--}1.6$ . Based on their best-fitting spectral energy distributions (SED), we find that 16 of the 26 galaxies are consistent with significant star-forming activity and  $\text{SFR} > 5 M_{\odot} \text{ yr}^{-1}$ . For galaxies in this redshift range, this represents an overdensity of approximately seven times compared to field star-forming galaxies at this level. This is possibly the most compelling evidence of the existence of a cluster in this region. To illustrate this, we constructed a number density map of galaxies with photometric redshifts in the range  $1.5\text{--}1.6$  and  $\text{SFR} > 5 M_{\odot} \text{ yr}^{-1}$  in this region, using a procedure similar to the one introduced by Dressler (1980). For this, we created a grid of  $300 \times 300$  positions spaced by 2 arcsec centred at the inferred cluster X-ray position, and computed the density from the distance to the 10th-nearest neighbour galaxy,  $d_{10}$ , to each grid point. The number density is thereby computed as  $n_{10} = 10/(\pi d_{10}^2)$ . Similar approaches have been applied to rich galaxy clusters (e.g. Guzzo et al. 2007). Fig. 2 shows the density map obtained, convolved with a Gaussian kernel that has a full-width at half-maximum (FWHM) of 9 arcsec. The number density,  $\delta$ , is given in terms of the average



**Figure 1.** Left: *BiK* colour composite of a  $3 \times 3 \text{ arcmin}^2$  region around the candidate cluster centre. Cyan contours show the XMM–Newton X-ray emission at  $2\sigma$ ,  $3\sigma$  and  $4\sigma$  significance. White circles show spectroscopically confirmed galaxies with redshifts  $z_{\text{spec}} = 1.470\text{--}1.595$ . Yellow circles represent spectroscopically confirmed galaxies with  $z_{\text{spec}} = 1.2\text{--}1.8$ . A large 30 arcsec radius circle indicates the location and field of view of our deep JVLA observations of the molecular gas. Right: close-up to the central  $80 \times 80 \text{ arcsec}^2$  around the JVLA pointing position. Labels indicate the sources ID tags.





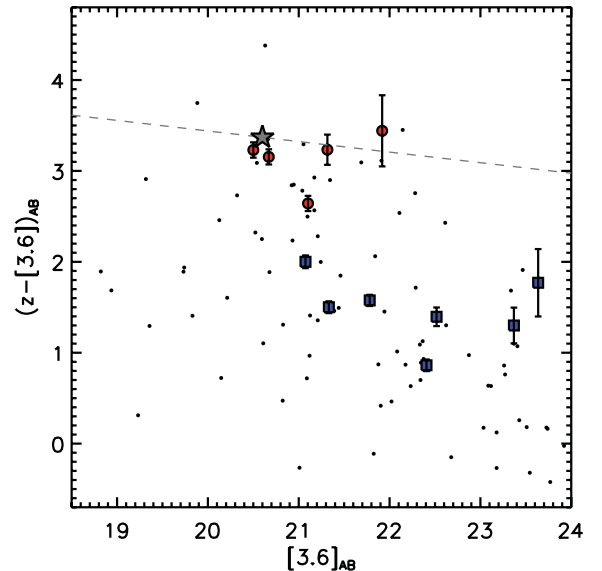
**Figure 2.** Projected number density of galaxies with  $z_{\text{phot}} = 1.5\text{--}1.6$  and  $\text{SFR} > 5 M_{\odot} \text{ yr}^{-1}$  in a  $3 \times 3 \text{ arcmin}^2$  region around the cluster centre. The grey-scale and contours represent the density of galaxies in this field,  $\delta_C$ , given in terms of the average density  $\delta_0$  of similarly selected galaxies in the COSMOS field,  $\delta = \delta_C/\delta_0$ . Contours range from 2 to 7 in steps of +1. The red circle represents the location of the JVLA pointing and PB FWHM.

density of field galaxies with  $z_{\text{phot}} = 1.5\text{--}1.6$  and  $\text{SFR} > 5 M_{\odot} \text{ yr}^{-1}$  in the COSMOS field,  $\delta_0 = 0.7 \text{ arcmin}^{-2}$ . The source density in this region is approximately seven times larger than this average. In terms of the standard deviation in the distribution of source density in the field,  $\sigma_0 = 0.24 \text{ arcmin}^{-2}$ , this corresponds to a fluctuation of  $\sim 18\sigma$  with respect to the average source density in the field. The average and standard deviation values were obtained by creating a density map of galaxies with  $z_{\text{phot}} = 1.5\text{--}1.6$  and  $\text{SFR} > 5 M_{\odot} \text{ yr}^{-1}$  in a nearby  $\sim 20 \times 20 \text{ arcmin}^2$  region that did not include the overdensity, using the same procedure as above. From the distribution of density values in this map, the average and standard deviation were computed.

The structure is tentatively detected in the XMM-Newton X-ray images at the  $3\sigma$  level (Fig. 1), and a bright, extended radio source close to the centre of the cluster is seen in the VLA 1.4 GHz images (see Section 3.2). This radio source was spectroscopically confirmed to be at  $z = 1.5185 \pm 0.002$ , based on the detection of the Mg II, [Ne V], [O II] and [Ne III] emission lines. The ubiquity of radio sources in high-redshift dense large-scale structures (Miley & De Breuck 2008) lends support to the existence of this galaxy cluster candidate. Details of this source are given in Section 3.2.

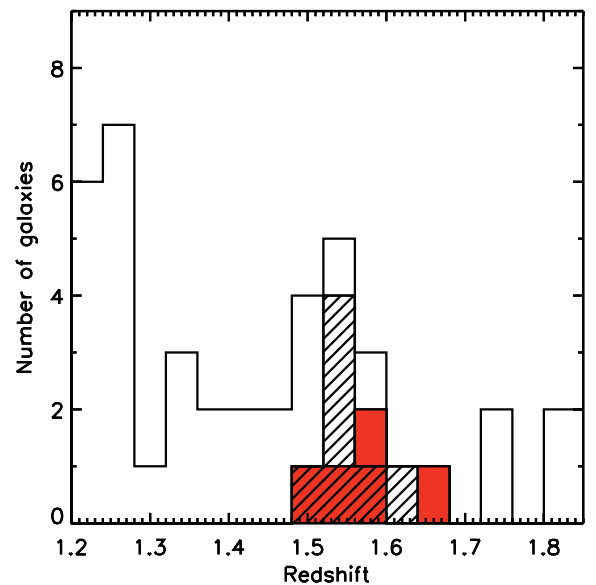
The cluster red-sequence technique represents an effective method to select galaxy clusters. It is based on the fact that galaxy clusters typically contain a uniform population of early-type galaxies. When using two photometric band filters to bracket the location of the 4000 Å break, which is typically a strong feature in passively evolving galaxies, early-type galaxies can be identified as the brightest and reddest objects in the field, forming a tight relation in colour-magnitude diagrams. Such a ‘red-sequence’ is pivoted by the brightest cluster galaxy, typically has a small scatter and has been shown to hold out to  $z \sim 1.5$  (Lidman et al. 2008; Bielby et al. 2010; Tanaka, Finoguenov & Ueda 2010).

Based on the red-sequence technique modified for high redshift (Lidman et al. 2008; Wilson et al. 2009; Finoguenov et al. 2010), we found evidence for the formation of a red sequence of passive galaxies in this field (Fig. 1). We used the  $(z - [3.6])$  galaxy colours,



**Figure 3.** Colour-magnitude diagram ( $z - [3.6]$  versus  $[3.6]$ ) of galaxies located within  $r_{200}$  (0.9 arcmin) from the centre of the cluster candidate. The grey dashed line shows a model red sequence for a cluster formation redshift of  $z_f = 3$  from Lidman et al. (2008). The grey star symbol represents the characteristic magnitude  $m^*$  for passively evolving galaxies. Blue filled squares correspond to galaxies in the redshift range  $z = 1.5\text{--}1.7$ . The red filled circles represent galaxies located in the same redshift range but identified to belong to the forming red-sequence. Small black circles show background/foreground galaxies in the field.

which select clusters at  $z > 1.2$ . Fig. 3 shows the colour-magnitude diagram obtained for galaxies located within a radius of 0.9 arcmin of the cluster centre (0.5 Mpc at  $z = 1.55$ ). When selecting objects with photometric redshifts in the range  $z_{\text{phot}} \sim 1.5\text{--}1.7$ , a number of bright, red galaxies compared to the bulk of ‘blue’ galaxies are visible. Fig. 4 shows the distribution of photometric redshifts for



**Figure 4.** The distribution of photometric redshifts of galaxies located within  $r_{200}$  from the centre of the cluster candidate. The open histogram shows all the galaxies in the field. The red histogram shows the redshift of the red-sequence identified galaxies, and the dashed histogram indicates the redshifts of galaxies shown in blue in Fig. 3.

galaxies in the field, highlighting the distribution formed from the red and blue galaxies from Fig. 3. From the redshift distribution for all galaxies in this region (empty histogram), it can be seen that there is a redshift peak in the distribution at  $z \sim 1.5$ – $1.6$ .

In addition to the available optical spectroscopic redshifts provided by zCOSMOS, a dedicated spectroscopy campaign targeting galaxies within a  $3 \times 3$  arcmin<sup>2</sup> region around the centre of the cluster candidate was performed using the Deep Imaging and Multi-Object Spectrograph (DEIMOS) on the Keck telescope and Multi-Object Infrared Camera and Spectrograph (MOIRCS) on the Subaru telescope (Fig. 1; Tanaka et al., in preparation). Due to bad weather conditions, however, it was not possible to obtain redshifts of the passive galaxies in the field. Nine sources within this region were confirmed to have spectroscopic redshifts in the range 1.47–1.59, which corresponds approximately to the range covered by the JVLA observations (see the next section; Fig. 1), including the galaxy associated with bright 1.4 GHz radio emission. This redshift range represents a large range in velocity,  $> 10\,000$  km s<sup>−1</sup>, which could point to a filamentary structure nature for the overdensity rather than a collapsed one.

Based on the spectroscopic and photometric redshift evidence, we pointed our JVLA observations targeting four spectroscopically confirmed galaxies that were located close to the maximum galaxy density in this field. In order to observe the CO 1–0 emission from the four spectroscopically confirmed galaxies, which includes the bright radio source, we tuned the JVLA receivers to cover the redshift range  $z \sim 1.47$ – $1.59$  (see the next section). Hereafter, and in the absence of spectroscopic evidence confirming this structure, we refer to this as a cluster candidate or overdensity. We stress that the existence of an overdensity in photometric redshift and angular scales, added to the large bandwidth of the JVLA, enables us to search for CO 1–0 emission from galaxies in this field irrespective of whether this overdensity is a cluster or not.

### 2.3 JVLA observations

Observations of the <sup>12</sup>CO  $J = 1$ – $0$  emission line ( $\nu_{\text{rest}} = 115.271$  GHz) in the cluster galaxies at  $z \sim 1.5$  were taken as part of the JVLA Residence Shared Risk Observing (RSRO) programme (program ID: AA330). The target field was observed during 2010 March to 2011 January and centred at  $\alpha_{J2000} = 10^{\text{h}}02^{\text{m}}41^{\text{s}}.6$ ,  $\delta_{J2000} = +01^{\circ}34'24''.0$ . The observations were made using the Q-band receivers (tunable range: 40–50 GHz) and taking advantage of the expanded bandwidth of the WIDAR correlator ( $\approx 2$  GHz).

Based on early spectroscopic and photometric redshift estimates that indicated a cluster redshift of  $z \approx 1.53$ , we tuned our observing frequency to 45.500 GHz. We used a wide bandwidth mode, with two intermediate frequency (IF) bands (or basebands: AC and BD), each formed by eight spectral windows (SPW). Each SPW was composed of 256 channels with a resolution of 2 MHz per channel. The SPW IDs range from 0 to 15. Combined, they cover a total bandwidth of 2048 MHz ( $\sim 2$  GHz). Since each SPW loses sensitivity at the edge channels and because at the time when the observations were taken the WIDAR correlator could not be configured to overlap different SPWs, we used two 2048 MHz bandwidth spectral setups shifted by five channels from each other. Two channels at each edge of the SPWs were thus flagged. This avoids spectral gaps, obtaining an even frequency coverage. At the edge SPW of each IF, the passband deteriorated more than in the other SPWs. Thus, 5, 3, 4 and 4 additional channels at the external IF borders of SPW ID 0, 7, 8 and 15, respectively, were flagged. This results in a coarser frequency coverage and a spectral gap of eight channels (16

MHz or  $105$  km s<sup>−1</sup>) in the middle of the band. Such problem was unforeseen prior or during the observations. Hence, the observations covered the frequency ranges 44.486–45.492 GHz (AC) and 45.508–46.514 GHz (BD), or approximately 1 GHz per band. This implies that we are able to detect the CO 1–0 line emission from galaxies in the redshift range  $z = 1.478$ – $1.591$  with a negligible gap of  $\Delta z \approx 0.0009$ .

Although for detection experiments the D-array configuration is better suited, the observations were taken in C-array configuration due to scheduling constraints. This implies that sources extended by more than 1 arcsec were slightly resolved with the consequent loss in sensitivity. The nearby source J1038+0512 ( $\sim 0.5$ – $0.7$  Jy;  $\sim 9^\circ$  distance to target) was observed every  $\sim 10$  min for gain calibration. The brighter sources J1256-0547 (3C279;  $\sim 16$ – $21$  Jy) and J1331+3030 (3C286;  $\approx 1.4$  Jy) were used for bandpass and flux calibration, respectively. Pointing calibration was performed on J1038+0512 every  $\sim 55$  min using the C-band receivers at 4.9 GHz.

Data calibration was done using the Common Astronomy Software Application (CASA) package. Time ranges with poor visibilities as well as the edge channels where the bandpass deteriorated, as explained above, were flagged. The final integration time amounts to  $\sim 20$  h on-source. At the observing frequency, the JVLA primary beam (PB) FWHM is  $\sim 60$  arcsec. To obtain flux measurements, we deconvolved the visibilities using the CLEAN task with natural weighting and a further taper of 0.8 arcsec, and applied the corresponding PB correction. We thus obtained a final resolution of  $1.1 \times 1.0$  arcsec<sup>2</sup> and an average rms of  $60 \mu\text{Jy beam}^{-1}$  per  $100$  km s<sup>−1</sup> channel. This corresponds to a physical scale of  $\sim 8.5$  kpc at the redshift of the overdensity and thus well suited to extract their extended emission without losing many long baselines.

## 3 RESULTS

### 3.1 CO 1–0 in two spectroscopically confirmed galaxies

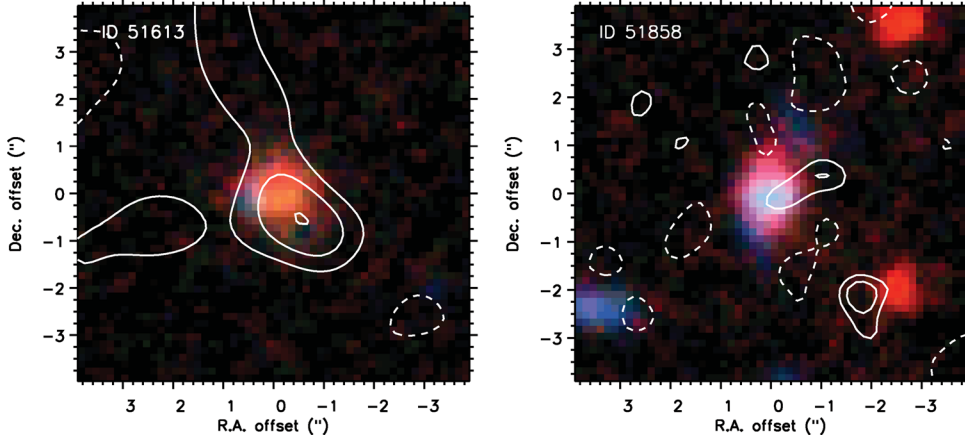
Our JVLA observations were designed to cover the CO 1–0 line emission from four galaxies that have an accurate optical/near-IR spectroscopic redshift in the range  $z = 1.478$ – $1.591$  and located spatially within the JVLA PB FWHM.

Since the frequency of the CO 1–0 line emission could be slightly offset from the frequency implied by the optical redshift, we first searched for a CO emission peak in the spectra along the line of sight. From this, we estimated the velocity integrated line flux emission at the CO peak frequency, if any. If no emission was detected in the spectra at the source position, we measured a limit to the emission based on the optical redshift assuming a typical line FWHM of  $300$  km s<sup>−1</sup>.

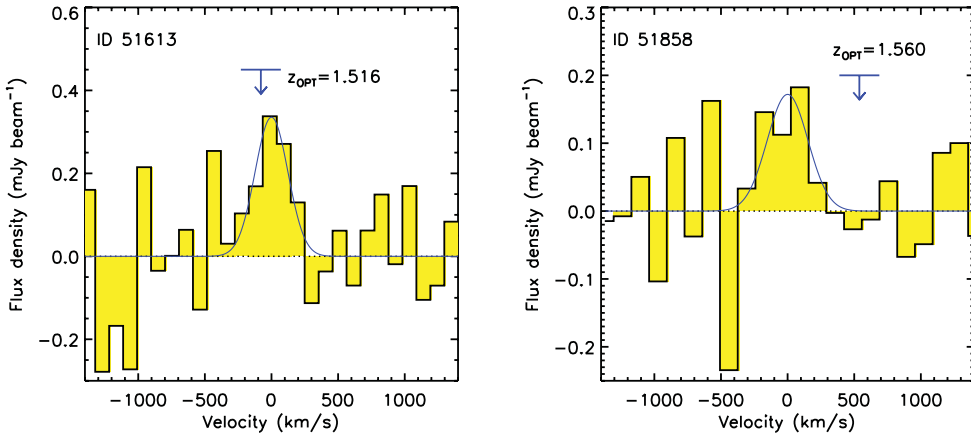
Two out of the four galaxies with optical spectroscopic redshift, ID 51858 and ID 51613, were nominally detected in CO 1–0 emission with significances of  $\approx 3\sigma$  and  $\approx 4\sigma$ , respectively. Figs 5 and 6 show the velocity averaged CO emission maps and the CO line profiles, respectively, computed at the position of the CO image peak emission. Table 1 summarizes the positions, redshifts, physical properties and derived parameters for these sources.

After inspection of the CO images with  $1.1 \times 1.0$  arcsec<sup>2</sup> resolution, the emission from ID 51613 appeared to be slightly resolved along the major axis. In order to perform flux measurements in this case, we applied a taper of 1.7 arcsec to the visibilities, leading to an image resolution of  $2.15 \times 1.90$  arcsec<sup>2</sup>.

From a Gaussian fit to the spectral line profiles, we measured formal line widths of  $360 \pm 220$  km s<sup>−1</sup> and  $200 \pm 80$  km s<sup>−1</sup> at



**Figure 5.** JVLA CO 1–0 emission line intensity map (PB corrected), averaged over 230 and 500  $\text{km s}^{-1}$  and centred at 45.810 GHz and 45.107 GHz for ID 51613 and ID 51858, respectively. The background corresponds to a  $Bi^+K$  colour-composite image. The CO emission is shown in contours in steps of  $1\sigma$ , starting at  $\pm 2\sigma$ , with  $\sigma = 120$  and  $40 \mu\text{Jy beam}^{-1}$ , for ID 51613 and ID 51858, respectively. The corresponding beam sizes are  $2.1 \times 1.9$  and  $1.1 \times 1.0$   $\text{arcsec}^2$ , respectively. Dashed contours represent negative signal. In the case of ID 51613 the resolution has been downgraded to increase the signal-to-noise ratio.



**Figure 6.** JVLA 45.5 GHz close-up spectrum towards the optical galaxies ID 51613 and ID 51858 at 93 and 132  $\text{km s}^{-1}$  per channel resolution, respectively. The emission profiles were measured at the peak position of the integrated emission close to the optical source. The arrow represents the frequency that corresponds to the CO 1–0 line at the optical spectroscopic redshift. The emission features identified with the CO 1–0 line emission are highlighted by a Gaussian fit (blue solid line).

**Table 1.** Observed CO properties for galaxies with spectroscopic redshift.

ID <sup>a</sup>	$\alpha_{J2000}$ <sup>b</sup>	$\delta_{J2000}$ <sup>b</sup>	$z_{\text{opt}}$ <sup>c</sup>	$z_{\text{CO}}$ <sup>d</sup>	$S_{\text{CO}} dv$ <sup>e</sup> ( $\text{Jy km s}^{-1}$ )	$L'_{\text{CO}}$ <sup>f</sup> ( $10^{10} \text{ K km s}^{-1} \text{ pc}^2$ )	$M(\text{gas})$ <sup>g</sup> ( $10^{10} M_{\odot}$ )
50480	10 02 40.47	+01 34 41.2	1.523	–	<0.053	<0.7	...
51130†	10 02 42.25	+01 34 32.5	1.519	–	<0.044	<0.6	...
51613	10 02 43.36	+01 34 20.9	1.516	1.517	$0.20 \pm 0.05$	$2.42 \pm 0.58$	$8.7 \pm 2.1$
51858	10 02 40.43	+01 34 13.1	1.560	1.556	$0.10 \pm 0.03$	$1.26 \pm 0.38$	$4.5 \pm 1.4$

†Radio galaxy.

<sup>a</sup>COSMOS ID.

<sup>b</sup>Position of the optical source.

<sup>c</sup>Optical redshift.

<sup>d</sup>CO redshift.

<sup>e</sup>Spatially and velocity integrated line flux.

<sup>f</sup>CO luminosity.

<sup>g</sup>Gas mass obtained using  $\alpha_{\text{CO}} = 3.6 M_{\odot} (\text{K km s}^{-1} \text{ pc}^2)^{-1}$ .

central frequencies of 45.1087 GHz and 45.8030 GHz for ID 51858 and ID 51613, respectively. Spatially integrated flux densities were obtained using a two-dimensional Gaussian fit to the CO maps. These results imply CO redshifts of  $1.5554 \pm 0.0008$  and  $1.5167 \pm$

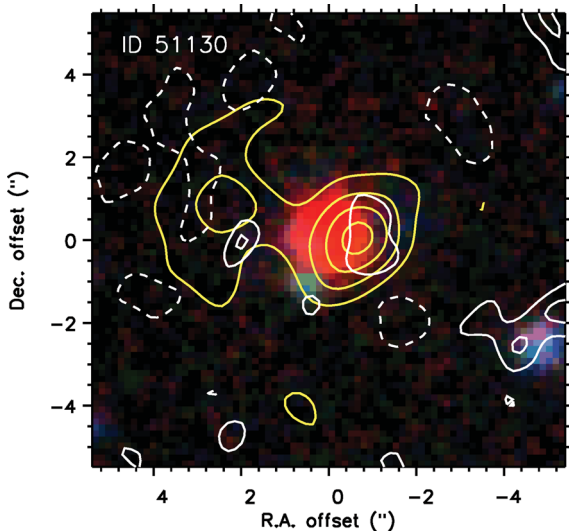
$0.0004$  for ID 51858 and ID 51613, respectively. This leads to a difference of  $\sim 590 \text{ km s}^{-1}$  with respect to the optical redshift in the former case. Such difference is large compared to that observed in some of the massive disc galaxies reported by Daddi et al. (2010a),

of  $\sim 200\text{--}300\text{ km s}^{-1}$ , however it is within the uncertainties implied by the low significance of this detection and the accuracy of the optical spectroscopic redshift determination, typically  $\delta z \sim 0.001$ , and well within the typical velocity differences between CO observations and rest-frame UV for SMGs and quasars, with a typical range  $0\text{--}500\text{ km s}^{-1}$  (Greve et al. 2005).

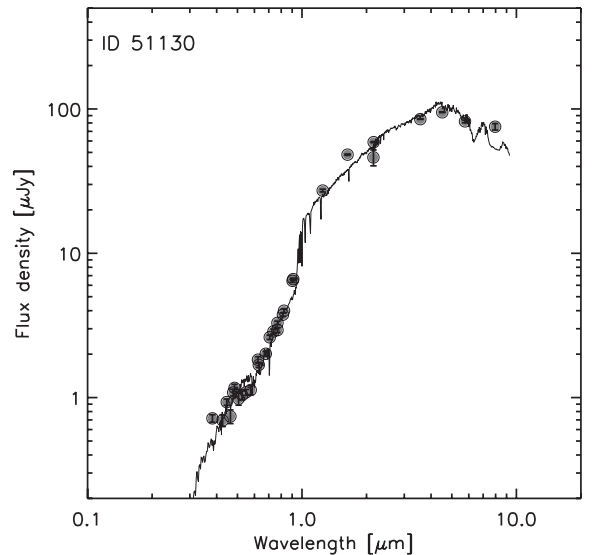
### 3.2 A massive radio galaxy at $z = 1.519$

Fig. 7 shows the VLA 1.4 GHz image of a prominent double peaked radio source identified in the field (see also Fig. 1). The radio source is associated with the bright optical galaxy ID 51130, which has an optical spectroscopic redshift of 1.519 (Table 1). Both 1.4 GHz peaks are identified as the source's radio lobes.

Based on the presence of radio lobes, a strong contribution from active galactic nuclei (AGN) activity would be expected. Since the source is not detected in the XMM-Newton X-ray maps, we explored the shape of the mid-IR SED since AGN sources tend to have a steeply rising SED from  $3.6$  to  $24\text{ }\mu\text{m}$ . For this, we compare the mid-IR colours of ID 51130 with three different colour-colour criteria from Lacy et al. (2004), Stern et al. (2005) and Ivison et al. (2004). ID 51130 has flux densities  $S_{3.6\text{ }\mu\text{m}} = 87\text{ }\mu\text{Jy}$ ,  $S_{4.5\text{ }\mu\text{m}} = 97\text{ }\mu\text{Jy}$ ,  $S_{5.8\text{ }\mu\text{m}} = 84\text{ }\mu\text{Jy}$ ,  $S_{8.0\text{ }\mu\text{m}} = 78\text{ }\mu\text{Jy}$  and  $S_{24\text{ }\mu\text{m}} = 220\text{ }\mu\text{Jy}$ , respectively, being clear it has a relatively flat mid-IR SED (Fig. 8). While the criterion proposed by Lacy et al. selects AGN based roughly on the colours  $\log(S_{5.8\text{ }\mu\text{m}}/S_{3.6\text{ }\mu\text{m}}) > -0.1$  and  $\log(S_{8.0\text{ }\mu\text{m}}/S_{4.5\text{ }\mu\text{m}}) > -0.2$ , Stern et al. use limits roughly defined by  $0.7 < (m_{5.8} - m_{8.0}) < 1.6$  and  $(m_{3.6} - m_{4.5}) > 0.3$ . Similarly, Ivison et al. defines a region occupied by AGN with  $S_{8.0\text{ }\mu\text{m}}/S_{4.5\text{ }\mu\text{m}} > 1$  and  $S_{24\text{ }\mu\text{m}}/S_{8.0\text{ }\mu\text{m}} < 5$ . Based on this, we find that ID 51130 only satisfies the Lacy et al. AGN criterion. The source is located outside the AGN regions defined by Stern et al. and Ivison et al., however in both cases this could still be consistent with a Seyfert 2 galaxy. From this, we conclude that there is not a substantial contribution from an AGN to the galaxy's emission at optical/IR wavelengths.



**Figure 7.** Radio continuum emission towards the massive radio-loud galaxy ID 51130. A  $Bi^+K_S$  colour-composite image is shown in the background. The VLA 1.4 GHz emission is shown in yellow contours with levels in steps of  $2\sigma$ , starting at  $\pm 2\sigma$ , with  $\sigma = 30\text{ }\mu\text{Jy beam}^{-1}$ . The 45.5 GHz continuum emission is represented by white contours in steps of  $1\sigma = 10\text{ }\mu\text{Jy beam}^{-1}$ , starting at  $\pm 2\sigma$ . Dashed contours represent negative fluctuations.



**Figure 8.** Optical to mid-IR SED of ID 51130. Grey filled circles with error bars represent the multi-wavelength photometry and the solid line shows the best-fitting template at the source's spectroscopic redshift  $z = 1.519$ .

Based on the lack of evidence pointing to an important AGN contribution, we fitted a pure galaxy model (with no AGN contribution) to the source's photometry (Fig. 8; see Section 3.7). Note that fitting pure galaxy templates to objects with no substantial AGN contribution such as Seyfert 2 galaxies is consistent with results from Salvato et al. (2011). The host galaxy's SED is best fitted by an 0.5 Gyr old galaxy template with an SFR of  $25\text{ M}_\odot\text{ yr}^{-1}$  that appears to have already formed a good fraction of its stars, as suggested by the large stellar mass (Table 2). This is consistent with the non-detection of CO line emission from this object down to a limit of  $L'_{\text{CO}} = 0.6 \times 10^{10}\text{ K km s}^{-1}\text{ pc}^2$  ( $3\sigma$ ). Since the nature of the host galaxy is unknown, we assume a CO luminosity to gas mass conversion factor  $\alpha_{\text{CO}} = 3.6\text{ M}_\odot (\text{K km s}^{-1}\text{ pc}^2)^{-1}$ , which is the typical value found for disc galaxies at high redshift (Daddi et al. 2010a; Magdis et al. 2011), and derive a limit to the gas mass of this object of  $2 \times 10^{10}\text{ M}_\odot$  ( $3\sigma$ ). We notice that this value of  $\alpha_{\text{CO}}$  traces the total amount of gas, including  $\text{H}_2$ , helium and  $\text{H I}$ , with the vast majority of the hydrogen ( $>90$  per cent) in molecular form (see Daddi et al. 2010a). Using a conversion factor of  $\sim 1\text{ M}_\odot (\text{K km s}^{-1}\text{ pc}^2)^{-1}$  would only put a stringent but less conservative limit. This limit is also consistent with the molecular gas masses typically found for radio AGN in the nearby Universe (e.g. table 4 in Smolčić & Riechers 2011).

To measure the continuum emission of this object at 45.5 GHz, we averaged the whole 2 GHz data set over channels and created a continuum image, inverting the visibilities using natural weighting with an additional tapering of  $0.8\text{ arcsec}$ . Fig. 7 compares the optical view of this galaxy with the radio emission observed at 1.4 GHz and at 45.5 GHz. The 1.4 GHz radio maps reach an rms level of  $\sim 30\text{ }\mu\text{Jy beam}^{-1}$  in this region of the COSMOS field. Two positive blobs, close to where the bulk of 1.4 GHz emission is located, can be distinguished in the 45.5 GHz continuum images, although at very low significance,  $\sim 2\text{--}3\sigma$ . By fitting a double component two-dimensional Gaussian to the 45.5 GHz map, we find an integrated flux density of  $145 \pm 50\text{ }\mu\text{Jy}$  and  $23 \pm 8\text{ }\mu\text{Jy}$  for the western and eastern radio peaks, respectively. At 1.4 GHz, both peaks are detected with integrated fluxes of  $400 \pm 30$  and  $520 \pm 90\text{ }\mu\text{Jy}$ , respectively (Schinnerer et al. 2007, 2010; Bondi et al. 2008). Deeper



**Table 2.** Physical properties.

ID <sup>a</sup>	$z_{\text{spec}}^b$	SFH $\tau^c$ (Gyr)	Age <sup>d</sup> (Gyr)	$M_V^e$ (mag)	$A_V^f$ (mag)	$M_{\text{stars}}^g$ ( $\times 10^{10} M_\odot$ )	SFR <sub>SED</sub> <sup>h</sup> ( $M_\odot \text{ yr}^{-1}$ )	SFR <sub>IR</sub> <sup>i</sup> ( $M_\odot \text{ yr}^{-1}$ )	SFE <sup>j</sup> ( $M_\odot \text{ yr}^{-1}$ )	$l_0$
50480	1.523	0.1	0.25	−21.1	0.2	$3.5^{+0.2}_{-0.2}$	4	...	>4	
51130	1.519	0.3	0.50	−24.0	1.3	$24^{+4.0}_{-2}$	25	94	>80	
51613	1.516	0.6	0.36	−22.4	1.9	$4.5^{+1.8}_{-1.5}$	130	97	23	
51858	1.556	3.0	0.36	−22.7	2.0	$6.0^{+1.6}_{-1.0}$	218	162	75	
51207	1.530	0.6	1.00	−21.9	2.5	$11^{+5.7}_{-1.3}$	66	83	47	
51380	1.551	0.6	0.25	−21.4	2.6	$2.8^{+1.3}_{-1.1}$	120	56	29	

<sup>a</sup>COSMOS ID.<sup>b</sup>CO-based spectroscopic redshift or optical, if CO undetected.<sup>c</sup>time-scale of exponentially declining SFH best-fitting template.<sup>d</sup>Age of the best-fitting template SED.<sup>e</sup>Optical absolute magnitude (AB).<sup>f</sup>Best-fitting extinction correction.<sup>g</sup>Best-fitting stellar mass. Uncertainties correspond to the 90 per cent confidence interval.<sup>h</sup>SFR derived from SED fitting.<sup>i</sup>SFR derived from IR luminosity, assuming  $\text{SFR}/(M_\odot \text{ yr}^{-1}) = 1.7 \times 10^{-10} L_{\text{IR}}/L_\odot$ ; <sup>j</sup>SFE =  $L_{\text{IR}}/L'_{\text{CO}}$  in units of  $l_0 = L_\odot$  ( $\text{K km s}^{-1} \text{ pc}^2$ )<sup>−1</sup>.

observations at 45.5 GHz would be needed to properly measure the spectral index of the radio lobes.

### 3.3 Search for CO line emission in galaxies

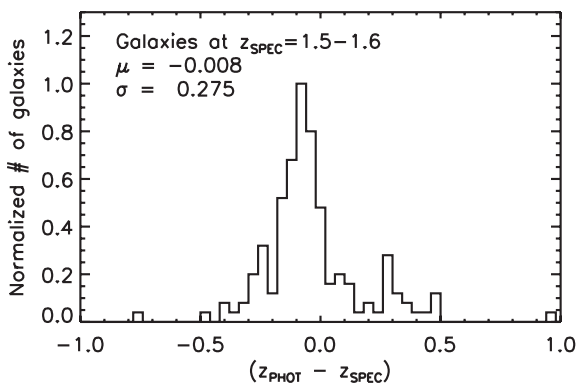
We took advantage of the unprecedented multi-wavelength coverage of the COSMOS field, as well as the accuracy of photometric redshifts computed with 31 UV/optical/IR bands (Ilbert et al. 2009; Salvato et al. 2011), to identify possible CO emission line peaks from optical galaxies within the field of view (60 arcsec).

We selected galaxies with  $K_s < 23.5$  mag (AB) and photometric redshifts in the range 1.2–1.8. The magnitude limit is set to guarantee that the photometric redshift determination is accurate, based on the comparison between spectroscopic and photometric redshifts for the COSMOS field; and that we trace galaxies with stellar masses  $> 2 \times 10^9 M_\odot$ . As mentioned above, our JVLA spectroscopic observations trace the CO 1–0 emission line in the redshift range  $\approx 1.48$ –1.59. In this range, the photometric redshift accuracy is  $\Delta z = |z_{\text{spec}} - z_{\text{phot}}| \approx 0.275$ , with a small systematic offset  $z_{\text{spec}} \approx z_{\text{phot}} + 0.008$  (Fig. 9). Hence, to comprise most of the galaxies in the redshift range 1.48–1.59, we conservatively selected galaxies with photometric redshifts in the range 1.2–1.8. Based on

the spectroscopic redshifts, we expect 5–10 per cent of galaxies to be photometric redshift outliers. From this, we have that a total of 26 galaxies are thus selected, of which up to three are expected to lie outside the specified redshift range.

For each selected optical source, we extracted a  $10 \times 10 \text{ arcsec}^2$  cutout from the full JVLA data cube, and searched for significant ( $> 4\sigma$ ) emission line peaks lying within a 1.0 arcsec radius from the optical source position. We performed the search making use of the Astronomical Image Processing System (AIPS) task `SEARCH`. For this, we used a data cube that had been de-convolved using a *Briggs* weighting scheme, with a robust parameter of 1.0, and an additional tapering of 0.8 arcsec, without PB correction. The weighting scheme without PB correction ensures a similar noise behaviour across the image, for all source positions. The `SEARCH` task uses a Gaussian kernel to convolve the data cube along the frequency axis with an expected input line width, and reports all channels and pixels having a signal-to-noise ratio over the specified limit. We experimented with various Gaussian kernel line widths, from  $\sim 200$  to  $500 \text{ km s}^{-1}$ , and found that an optimal width is using  $\sim 350 \text{ km s}^{-1}$ . Using larger line widths does not increase the number of coincidences between optical sources and line peaks; however smaller widths ( $\sim 200 \text{ km s}^{-1}$ ) tend to produce a significantly larger number of line peaks (30 per cent more) with no optical associations, which are likely spurious.

A similar approach to search for CO candidates at high redshift is to blindly search for peaks in the full field of view of the JVLA observations, and then cross-correlate the possible detections with the optical catalogue, using the same constraints on magnitudes and photometric redshifts and searching for nearby associations. Since such approach is still limited by the existence of optical sources, it essentially leads to the same results. We focused only on line peaks associated with relatively bright optical sources since this approach will produce more reliable results. Note that the frequency coverage of our observations also enables us to detect CO 2–1 emission from galaxies in the redshift range  $z = 3.956$ –4.182; however such sources are expected to be very faint in the optical, being more difficult to find a clear optical counterpart identification. Search for line peaks associated with  $z \sim 4$  sources is out of the scope of this paper.



**Figure 9.** Comparison between spectroscopic and photometric redshifts for galaxies in the COSMOS field at  $z = 1.5$ –1.6. A dispersion  $\sigma = 0.275$  is measured from the mean  $\mu = -0.008$ .

**Table 3.** Observed line properties for CO-identified galaxies with photometric redshift in the range 1.2–1.8.

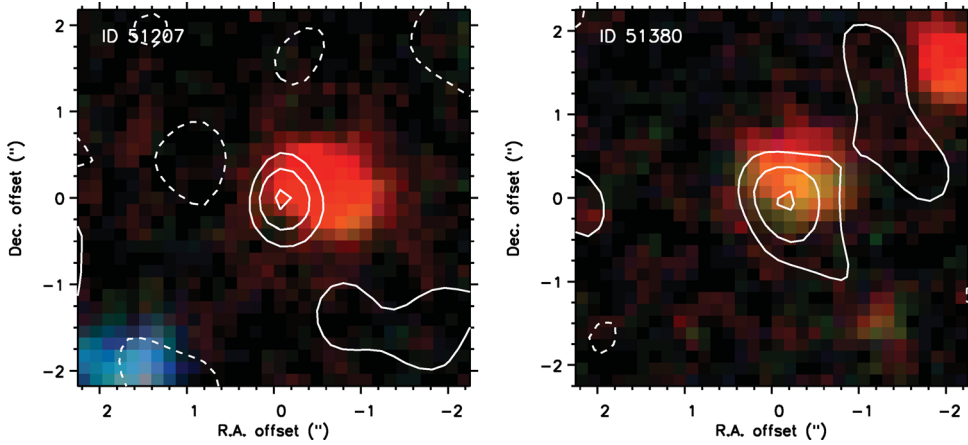
ID <sup>a</sup>	$\alpha_{J2000}^b$ (J2000)	$\delta_{J2000}^b$ (J2000)	$d$ (arcsec)	$z_{\text{phot}}^c$	$z_{\text{CO}}^d$	$S_{\text{CO}} dv^e$ (Jy km s <sup>-1</sup> )	$L'_{\text{CO}}^f$ (10 <sup>10</sup> K km s <sup>-1</sup> pc <sup>2</sup> )	$M(\text{H}_2)^g$ (10 <sup>10</sup> M <sub>⊙</sub> )
51207	10 <sup>h</sup> 02 <sup>m</sup> 43 <sup>s</sup> .400	+01°34'33".12	0.60	1.529	1.530	0.085 ± 0.021	1.03 ± 0.25	3.7
51380	10 <sup>h</sup> 02 <sup>m</sup> 40 <sup>s</sup> .810	+01°34'27".51	0.34	1.450	1.551	0.090 ± 0.021	1.12 ± 0.26	4.0

<sup>a</sup>COSMOS ID.<sup>b</sup>Position of the optical source.<sup>c</sup>Optical photometric redshift.<sup>d</sup>CO redshift.<sup>e</sup>Spatially and velocity integrated line flux.<sup>f</sup>CO luminosity.<sup>g</sup>Gas mass obtained using a galactic conversion factor  $\alpha_{\text{CO}} = 3.6 \text{ M}_{\odot} (\text{K km s}^{-1} \text{ pc}^2)^{-1}$ .

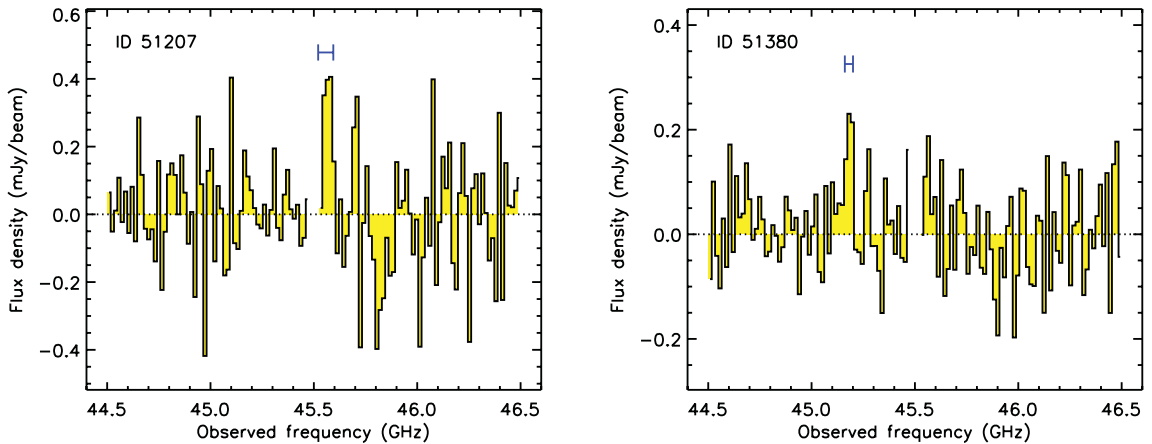
We find that two optical sources, ID 51207 and ID 51380, can be identified with emission line peaks from the data cube. The spatial coincidence in both cases is better than 0.6 arcsec. Table 3 summarizes the results and Figs 10 and 11 show the extracted spectra and images. In both cases, the line peaks have significances  $>4\sigma$ ; however in the case of ID 51207, the positive line peak in the

spectrum is followed by a region of noise channels with negative flux density. This is likely because this source is located at the border of the considered JVLA PB FWHM coverage, where the noise starts to increase.

An additional line association is found for an optical source for which a secure optical spectroscopic redshift of 1.240 (ID 51861)



**Figure 10.** JVLA CO 1–0 emission line intensity map (PB corrected), averaged over 480 and 260 for ID 51207 and ID 51380, respectively. The background image corresponds to a  $Bi^+K$  colour-composite. The candidate CO emission is shown in contours in steps of  $1\sigma$ , starting at  $\pm 2\sigma$ , with  $\sigma = 53$  and  $57 \mu\text{Jy beam}^{-1}$ , respectively.



**Figure 11.** JVLA 45.5 GHz spectrum towards ID 51207 and ID 51380. Channel separation is 16 MHz or  $\sim 105 \text{ km s}^{-1}$  per channel. The emission profiles were measured at the peak position of the integrated emission. The identified emission feature is shown by a blue horizontal bar with a width equal to the line FWHM.

had been obtained. Its optical redshift discards the possibility of it being a CO detection, since CO 1–0 could only be detected in the range  $\approx 1.48$ – $1.59$ . At the redshift of this source, no bright emission line from molecules is expected. Therefore, we regard this as a spurious detection. This identification is discussed in more detail in the following sections.

None of the CO sources with optical spectroscopic redshift was found using this method. This is because, at the resolution of the searched data cube ( $\sim 1$  arcsec), ID 51613 has a peak significance of only  $\sim 3.2\sigma$ . In this case, it was necessary to deconvolve the images to a lower resolution of  $\sim 2$  arcsec to maximize the signal-to-noise ratio. In the case of ID 51858, the significance of the CO detection is too low to be picked up by our signal-to-noise ratio limit.

### 3.4 Line search from Bayesian inference

We performed an independent search for line peaks using model fitting to the data cube upon the principles of Bayesian inference with the MultiNest algorithm (Feroz & Hobson 2008). This method provides an efficient way of sampling from the posterior probability distribution and calculating evidence values. We use a galaxy model characterized by a set of parameters  $\Theta$  (e.g.  $x, y$  positions, line profile central frequency), such that spatially a source is described by a circular or elliptical Gaussian, and in the frequency domain the rotation curve is approximated using either a Gaussian line profile or Brandt’s parametrization (Brandt 1960). A full description of this approach to source line searches is given by Feroz & Hobson (2008).

Selection between two models  $H_0$  (that there is no source present) and  $H_1$  (that there is a source present) can be performed by comparing their evidence values,  $Z_1$  and  $Z_2$ , via  $R = Z_1/Z_2$ . The probability that there is a source present in the data is then computed from the relation  $P = R/(1 + R)$ .

The four galaxies that have optical spectroscopic redshifts in the range covered by the JVLA observations were searched within a radius of 1 arcsec of the optical identification, and central frequencies accurate to within 1 channel width ( $\sim 100 \text{ km s}^{-1}$ ) from their optical spectroscopic redshifts. No line detection is found for ID 51130 and ID 51480; however we find 55 per cent and 41 per cent probability that there is line emission from ID 51613 and ID 51858, respectively. Probability values  $> 50$  per cent are considered as good evidence that there are line detections, given that at this level  $< 30$  per cent of the identified peaks are expected to be spurious line detections. In the case of ID 51858, the lower probability is due to the significant offset between the measured line frequency and the frequency implied by the optical spectroscopic redshift.

The remaining galaxies with photometric redshifts were searched within a radius of 1 arcsec from the optical identifications, but central frequencies covering the full bandwidth of the JVLA observations. Using this method, the two identified CO source candidates presented in Section 3.3, ID 51207 and ID 51380, were found to have probabilities of 13 per cent and 70 per cent that there is a source present, respectively. ID 51861, however, has a probability of 53 per cent, even though it is a confirmed spurious detection. Such values must therefore be taken with caution, as they give an estimate of the reliability that the line peak can be described with a physical model of how a CO emission line typically looks like, and they do not take into account the properties of the identified optical sources. The low probability measured for ID 51207 is likely due to the fact that this source lies at a channel, a position (border of the image), where the noise degrades.

Finally, we remark that a total of seven line candidate detections with  $P > 50$  per cent are found using this method, six of which are also found with SERCH. Three of them correspond to sources studied in this work: ID 51380, ID 51613, ID 51861. The rest, despite their high probability, are peaks with lower signal-to-noise ratio values, as measured directly in the JVLA maps, and therefore not considered further.

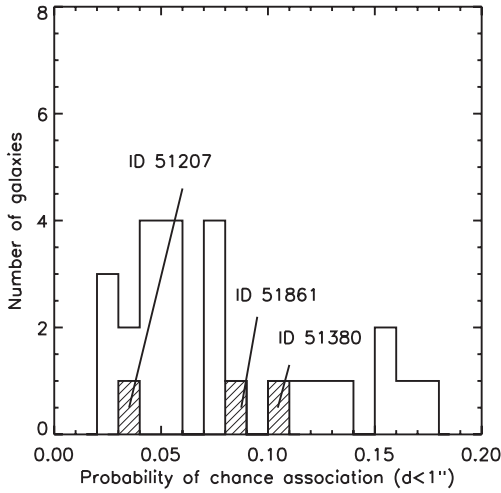
### 3.5 Probability of chance association

We estimated the probability that a line peak would be associated by chance within 1.0 arcsec from an optical galaxy by performing a Monte Carlo simulation of the distribution of significant line peaks in the JVLA field.

Before starting with simulations, we first carried out a blind search for all positive peaks that have a signal-to-noise ratio of  $> 4.0$  within the JVLA data cube, using a Gaussian kernel width of  $350 \text{ km s}^{-1}$ . This search yielded a total of 61 line peak candidates within the 60 arcsec JVLA PB. The peaks appear to be slightly clustered in some regions of the image and thus they are not strictly random. From the 61 peaks, three correspond to the optical identifications presented in Section 3.3, of which one is spurious as noted in the previous section, and nine constitute additional line-peak/optical-source associations that do not meet all the specified  $K_{\text{AB}} < 23.5$  and  $z_{\text{phot}} = 1.2$ – $1.8$  criteria. All these extra associations coincide with optical sources in the redshift range 1.3–2.4. A total of 49 of the 61 line peaks (80 per cent) do not have a clear nearby optical counterpart and likely correspond to spurious detections. This means that up to 20 per cent of the cases could correspond to real CO line emitting galaxies. We note that we are biasing our counterpart selection by using only the optical  $i^+$ -band selected source catalogue. Thus, line peak detections with no optical counterpart could still represent real sources. For instance, highly obscured sources or at high redshift ( $z > 4$ ) are typically missed by optical catalogues and they can only be revealed in IRAC images (or at far-IR/submillimetre wavelengths; e.g. Dannerbauer, Walter & Morrison 2008). As mentioned previously, searching for these kind of sources is out of the scope of this paper.

To compute the probability  $P$  of chance association between a random peak detection and an optical source within 1 arcsec radius, we performed Monte Carlo simulations of line peaks in the JVLA region. In each of the  $10^4$  samplings, we generated 61 peaks drawn by the real spatial distribution of peaks in the field (we measured this by constructing a density map of peaks using a seventh-nearest neighbour method.), and thereby computed  $P$  as the fraction of simulated line peaks that are associated with our two optical sources: ID 51207, ID 51380; and also to the spurious identification of ID 51861 for comparison.

Fig. 12 shows the computed probability of chance association for these three sources (filled diagram), as derived from our simulations, compared to the probability that any of the other optical sources that meet our selection criteria would have been associated with a line peak by chance (solid histogram). For several optical sources that meet our selection criteria, including our line identified targets, the probability to find a line peak within 1 arcsec is non-negligible, but in all cases less than 20 per cent. While for ID 51207 the probability is small ( $\sim 3$  per cent), in the cases of ID 51380 and ID 51861 there is  $\sim 10$  per cent probability that they are associated by chance. Such probabilities represent an upper limit, since the actual matches in those cases were better than 1 arcsec. This procedure, however, assumes that the optical selection criteria provide



**Figure 12.** Distribution of the probability  $P$  that an optical source is associated by chance within 1 arcsec with any of the 61 significant line peak in the observed region. The dashed histogram shows the value of  $P$  for the optical sources found to be associated with emission line peaks. The solid empty histogram shows  $P$  for the other optical sources, which met the selection criteria, if they were associated with significant line peaks. Given the low number of significant emission line peaks in the cube, an association by chance is unlikely.

good galaxy candidates with redshifts accurate to within  $\delta z < 0.2$  in a case-by-case basis.

In the case of the identification of the optical source ID 51861 with a line peak, it is important to note that even if the photometric redshift estimate ( $z_{\text{phot}} = 1.436$ ) would have agreed better with

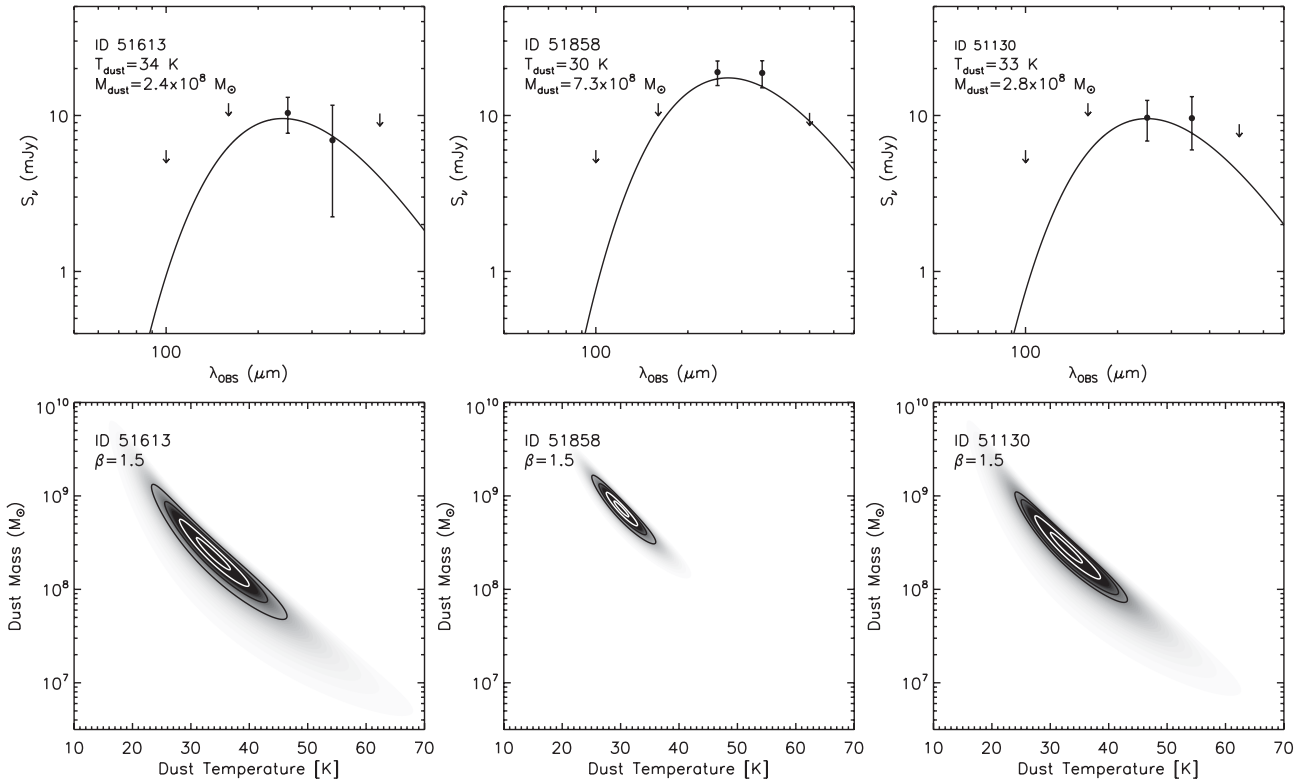
the spectroscopic one ( $z_{\text{spec}} = 1.240$ ), we would have still selected this source as a possible line candidate given our selection range  $z_{\text{phot}} = 1.2\text{--}1.8$ . However, a critical difference between source ID 51861 with respect to ID 51207 and ID 51380 is that the two later correspond to faint IR detections (see Section 4.1). Clearly, detection of IR emission, which is directly linked to dust and gas content, makes a CO detection more likely. The only way to avoid spurious detections is to impose tighter selection criteria, including tighter photometric redshift ranges and detection of sources in the IR bands, at the expense of missing a larger number of emission line candidates.

Finally, we estimated the false match probability by computing the number of associations between negative peaks in the data cube with  $\text{SNR} < -4\sigma$ , searched in the same way than the positive peaks as above, with optical sources that meet our specified selection criteria. From a total of 70 negative peaks, we find only one association within 1 arcsec from an optical source, and thus imply a  $\sim 2$  per cent false match probability for our positive detections.

### 3.6 Dust properties

An important ingredient to characterize the properties of galaxies and to test the reliability of the CO candidate sources is their far-IR emission produced by dust. For the derived CO 1–0 luminosities, it would be difficult to not detect the sources in the *Spitzer* and *Herschel* Spectral and Photometric Imaging Receiver (SPIRE) maps for typical gas to dust ratios and SFRs. Detection in these IR bands and consistency of the expected IR luminosities can give strong supporting evidence of the reality of the CO line emission.

A number of the galaxies targeted by the JVL A observations have far-IR measurements provided by the *Herschel* PACS and SPIRE



**Figure 13.** Top: best-fitting single-component grey body dust models for objects detected in two bands with *Herschel*. Bottom: normalized likelihood distribution for different combinations of dust temperatures and masses for  $\beta = 1.5$ , obtained from the comparison between the data and the grey-body models. Contours represent levels at 0.4, 0.6, 0.8 and 0.9.



imaging surveys of the COSMOS field (Lutz et al. 2011; Oliver et al. 2012). Since the galaxies in the targeted region are strongly clustered, the emission is blended in the *Herschel* images. Fluxes from the PACS/SPIRE maps were thus extracted using the 24  $\mu\text{m}$  positions as priors, as explained in detail by Lutz et al. (2011). This provides reliable measurements of the far-IR fluxes, for galaxies detected in the *Spitzer* MIPS 24  $\mu\text{m}$  images.

Within the JVLA field of view (Fig. 1), we find 10 MIPS 24  $\mu\text{m}$  sources, eight of which have photometric redshifts  $>1.0$ . Five of these eight correspond to sources detected with SPIRE at 250  $\mu\text{m}$  with  $z_{\text{phot}} = 1.4\text{--}1.6$ , three of which are also detected at 350  $\mu\text{m}$  with signal-to-noise ratio  $>4\sigma$ . Four of the five SPIRE detected galaxies have associated CO detections. The remaining three out of the eight high-redshift 24  $\mu\text{m}$  sources either are not detected by *Herschel* or lie at  $z > 2$ . None of the eight high-redshift 24  $\mu\text{m}$  sources is detected with PACS at 100 or 160  $\mu\text{m}$ , or with SPIRE at 500  $\mu\text{m}$ . These data, however, provide important constraints to the far-IR SED. For reference, SPIRE confusion limits on the HerMES fields are 5.8, 6.3 and 6.8 mJy beam $^{-1}$  at 250, 350 and 500  $\mu\text{m}$ , respectively (Nguyen et al. 2010). In Table 3 we list the measured IR flux densities for the CO detected sources and candidates, including the radio source ID 51130.

For the three galaxies that were detected at both 250 and 350  $\mu\text{m}$ , we fitted a single-component grey-body dust model using the *Herschel* photometry. We assume optically thin emission ( $\tau_\nu < 1$ ), with the flux density given by

$$S_\nu = \frac{(1+z)}{D_L^2} M_d \kappa_\nu [B_\nu(T_d) - B_\nu(T_{\text{BG}})], \quad (1)$$

where  $B_\nu(T)$  is the Planck function, and  $T_d$  and  $M_d$  correspond to the dust temperature and mass.  $D_L$  and  $T_{\text{BG}}$  are the luminosity distance and cosmic microwave background temperature at the source's redshift, respectively. The dust absorption coefficient is parametrized as  $\kappa_\nu = \kappa_0(\nu/\nu_0)^\beta$ , where we adopt an emissivity index  $\beta = 1.5$  (Kovács et al. 2006; Magdis et al. 2011) and  $\kappa_0 = 0.4 \text{ cm}^2 \text{ gr}^{-1}$  at 250 GHz (Kruegel & Siebenmorgen 1994).

Fig. 13 shows the best-fitting models to the far-IR data points along with the likelihood distribution, illustrating the uncertainties involved in temperature and mass. We find dust temperatures of  $34 \pm 4 \text{ K}$ ,  $30 \pm 2 \text{ K}$  and  $33 \pm 4 \text{ K}$ , and dust masses of  $(2.3 \pm 0.4) \times 10^8 M_\odot$ ,  $(7.3 \pm 0.8) \times 10^8 M_\odot$  and  $(2.8 \pm 0.5) \times 10^8 M_\odot$  for ID 51613, ID 51858 and ID 51130, respectively. These correspond to total IR luminosities (integrated over the range 8–1000  $\mu\text{m}$ ) of  $5.7 \times 10^{11} L_\odot$ ,  $9.5 \times 10^{11} L_\odot$  and  $5.5 \times 10^{11} L_\odot$ , respectively. We note that given the lack of detections at shorter IR wavelengths (2570  $\mu\text{m}$  rest frame), it is not possible to estimate the contribution of a hot dust component, although the contribution to the IR luminosity is likely negligible.

In the two cases where only the 250  $\mu\text{m}$  emission was detected, we fit only the dust mass (and hence the IR luminosity) by fixing the dust temperature to 35 K, which is the typical value found for star-forming galaxies at high redshift (Kovács et al. 2006; Magdis et al. 2011). We find dust masses of  $1.7 \times 10^8 M_\odot$  and  $1.1 \times 10^8 M_\odot$ , and IR luminosities of  $4.9 \times 10^{11} L_\odot$  and  $3.3 \times 10^{11} L_\odot$  for ID 51207 and ID 51380, respectively. Varying the assumed dust temperature in a typical range 30–40 K leads to dust masses in the range  $(1.0\text{--}3.4) \times 10^8 M_\odot$  and  $(0.7\text{--}2.3) \times 10^8 M_\odot$ , and thus IR luminosities in the range  $(4.2\text{--}6.0) \times 10^{11} L_\odot$  and  $(2.8\text{--}4.0) \times 10^{11} L_\odot$ , for ID 51207 and ID 51380, respectively. This corresponds to  $\sim 30$  per cent uncertainty in luminosity caused by our assumption in dust temperature. Finally, we remark that given the lack of sufficient constraints on the far-IR SED for these galaxies,

**Table 4.** Flux densities measured with *Spitzer* and *Herschel*.

ID <sup>a,b</sup>	$S_{24}^c$ ( $\mu\text{Jy}$ )	$S_{250}^d$ (mJy)	$S_{350}^d$ (mJy)	$S_{500}^d$ (mJy)
51130	$220 \pm 30$	$9.7 \pm 1.7(2.8)$	$9.6 \pm 2.1(3.6)$	$<8.8$
51613	$125 \pm 20$	$10.4 \pm 1.5(2.7)$	$6.9 \pm 3.7(4.7)$	$<10.3$
51858	$150 \pm 15$	$19.0 \pm 2.6(3.4)$	$18.7 \pm 2.3(3.7)$	$<10.4$
51207	$110 \pm 15$	$7.7 \pm 1.5(2.7)$	$<9.6$	$<7.7$
51380	$65 \pm 17$	$5.0 \pm 0.5(2.3)$	$<13.3$	$<9.7$

<sup>a</sup>COSMOS ID.

<sup>b</sup>*Herschel* PACS measurements led to  $3\sigma$  upper limits of 6 and 12 mJy at 100 and 160  $\mu\text{m}$ , respectively.

<sup>c</sup>Flux density measured with the *Spitzer* MIPS at 24  $\mu\text{m}$ .

<sup>d</sup>Flux densities measured with *Herschel* SPIRE at 250, 350 and 500  $\mu\text{m}$  and were computed using the 24  $\mu\text{m}$  position as prior (Lutz et al. 2011). Quoted uncertainties correspond to the map flux error and total uncertainty (including instrumental errors), shown in parenthesis, at the given band.

our luminosity estimates could be affected by different choices of  $\beta$ , as well as dust temperatures, and thus should be taken with caution.

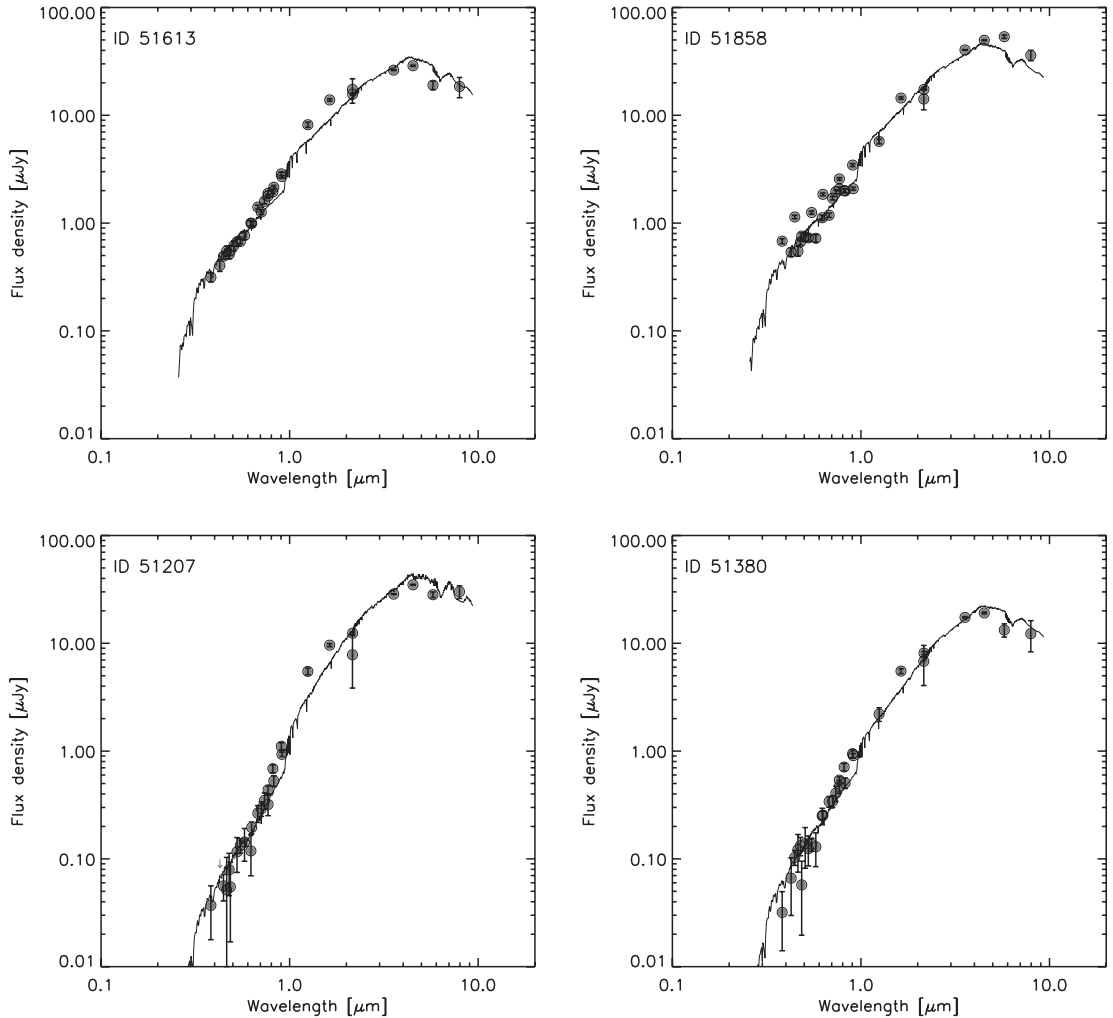
### 3.7 Galaxy properties

We use the full multi-wavelength data set available in the COSMOS field, including 31 broad, intermediate and narrow bands from the UV/optical and the IRAC 3.6  $\mu\text{m}$ , 4.5  $\mu\text{m}$ , 5.8  $\mu\text{m}$  and 8.0  $\mu\text{m}$  bands, to measure the range of physical properties of the observed galaxies in the JVLA field.

We computed SFRs and stellar masses using the SED fitting routine HyperZ (Bolzonella, Miralles & Pelló 2000) and fixing the spectroscopic redshift as given by the optical spectra or the CO line identification, under the assumption that the latter is correct for the two CO identified candidates (ID 51207 and ID 51380). We made use of an updated version of the COSMOS photometric catalogue (see Salvato et al. 2011), and applied the appropriate galactic extinction corrections, and ‘auto-offsets’ for SED fitting computation (Ilbert et al. 2009; Salvato et al. 2011).

We utilized six synthetic template sets from the Bruzual & Charlot (2003) libraries, including a constant star formation history (SFH) and four exponentially declining ones, with typical decaying time-scales of 0.1, 0.3, 0.6, 3.0 and 10 Gyr. We used an extinction correction from Calzetti et al. (2000), with an optical extinction  $A_V = 0 - 3$ . Both the best-fitting template and the fixed redshift give the absolute magnitude, which combined with a prescription for the mass-to-light ratio and SFR from the UV/optical continuum for each template can be used to derive the stellar masses and SFR for each galaxy. Due to degeneracies in the extinction correction and best template fit, and the use of templates that do not include emission lines, these estimates lead to typical uncertainties of 30–50 per cent, similar to what was reported in other similar studies (Daddi et al. 2010a; Tacconi et al. 2010). Table 2 lists the obtained parameters for the best-fitting template SEDs. For the CO detected and CO candidate galaxies, we also show the best-fitting template at the derived CO redshift (Fig. 14).

From the good agreement between the spectroscopic and the photometric redshifts for the galaxies in our field, we use the results from Ilbert et al. (2009) as a cross-check for the parameters used in our fitting routine (e.g. template libraries, extinction). Such measurements provide an independent estimate of the stellar masses and SFRs at the best-fitting photometric redshift. We find that while both



**Figure 14.** Optical to mid-IR SED towards both CO detected galaxies (ID 51613 and ID 51858) and CO candidates (ID 51207 and ID 51380). Data points are drawn from the COSMOS field multi-wavelength photometry. Solid lines show the best-fitting templates from the libraries of Bruzual & Charlot (2003).

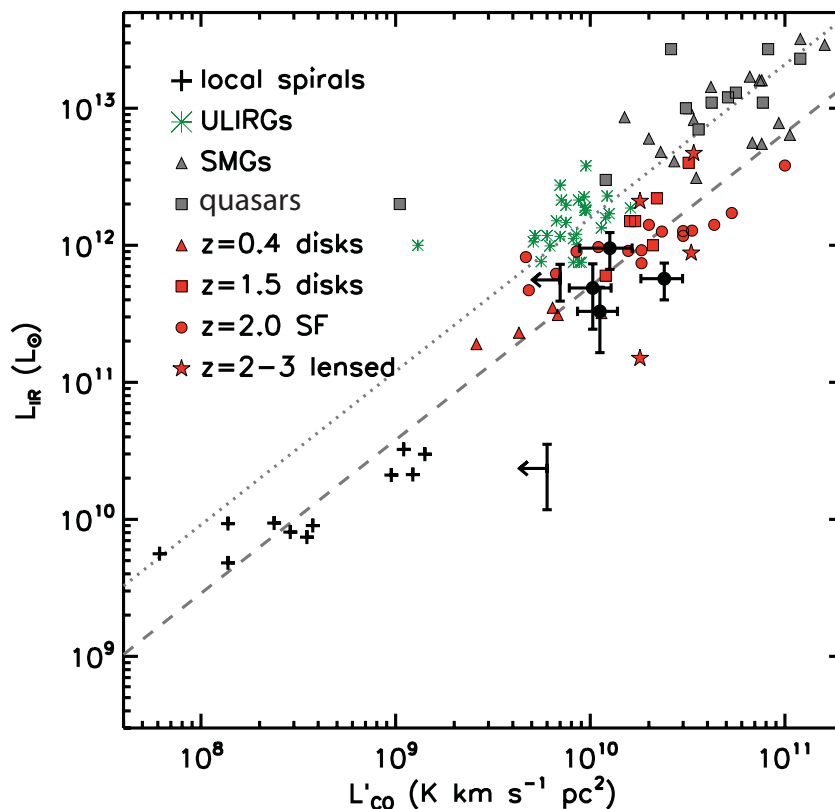
SFR estimates are in agreement with a typical uncertainty of 30 per cent, the stellar mass estimates are in agreement to within 15 per cent. The larger difference between both SFR estimates, compared to the difference in stellar masses, reflect the uncertainties in the extinction correction applied. While estimates for the stellar masses largely rely on the rest-frame optical and near-IR emission, which is less affected by extinction, estimates for the SFR are based on the rest-frame UV for which a proper extinction correction factor plays a key role.

An independent and more direct measure for the SFR is given by the far-IR emission, and we use it as the actual SFR in the following text. From Kennicutt (1998), we have  $\text{SFR}/[\text{M}_{\odot} \text{ yr}^{-1}] = 1.7 \times 10^{-10} L_{\text{IR}}/L_{\odot}$ . The IR-derived and SED fitting derived estimates are in agreement to within 25 per cent, and have a dispersion of only  $\sim 10$  per cent from the average SFR (see Table 2). The only exception is ID 51130, where the SED fitting routine implies  $\text{SFR} = 25 \text{ M}_{\odot} \text{ yr}^{-1}$ , while the IR luminosity indicates  $\text{SFR} = 93.5 \text{ M}_{\odot} \text{ yr}^{-1}$ . This difference could be explained by the fitted template SED that does not represent the real nature of this source, despite it provides a good fit to the photometric data points (low  $\chi^2$ ). This large difference may also reflect the uncertainties in the derived IR luminosity given that the IR data are close to the SPIRE confusion limit. Table 2 lists the computed SFR values.

## 4 DISCUSSION

### 4.1 Star formation rates and efficiencies

Recent studies suggest that, compared to starbursting ultra-luminous IR galaxies (ULIRGs) and SMGs, spiral and disc galaxies have substantial differences in SFEs and dynamical time-scales (Daddi et al. 2010a,b; Genzel et al. 2010). This has been interpreted as evidence for different modes of star formation. Discs appear to evolve secularly, with long dynamical and gas consumption time-scales, while starbursts seem to evolve rapidly, possibly triggered by merger-induced activity. However, it has been argued that such fundamental differences in the SFEs are, at least partially, produced by observational reasons. Aside from the large uncertainties in CO and IR measurements in ULIRGs and SMGs, the large majority of the CO observations have been done in high- $J$  CO transitions ( $J > 2$ ). Extrapolation from high- $J$  CO luminosities to CO 1–0, a direct tracer of molecular gas mass, is not straightforward in a case-by-case basis, as CO 1–0 measurements in a few SMGs found approximately two times more molecular gas than predicted by the CO 3–2 emission line (Bothwell et al. 2010; Ivison et al. 2011; Riechers 2011). Furthermore, such differences in SFE are increased when using different CO luminosity to gas



**Figure 15.** CO  $J = 1-0$  and IR luminosities of the CO-detected galaxies in our cluster field, shown by black filled circles, compared with other galaxy samples. Black crosses show measurements for local spiral galaxies (Leroy et al. 2008) and green asterisks represent local ULIRGs (Solomon et al. 1997). Grey triangles and squares show high-redshift SMGs and quasar host galaxies, respectively (see text). Red triangles, squares and circles show massive disc galaxies at  $z \sim 0.4$  (Geach et al. 2011),  $z \sim 1.5$  (Daddi et al. 2010a), and typical massive star-forming galaxies at  $z \sim 1-2$  (Tacconi et al. 2010), respectively. Red five-pointed stars show four lensed massive star-forming galaxies at  $z = 2-3$ , which have intrinsic properties similar to  $z \sim 1-2$  discs (Riechers et al. 2010b; Frayer et al. 2011). In cases where only  $J > 1$  CO lines are available, we corrected to the CO  $J = 1-0$  line (see text). Following Daddi et al. (2010a), we show a representative fit to local spirals and disc galaxies at high-redshift (grey dashed line),  $\log_{10} L_{\text{IR}} = 1.12 \times \log_{10} L_{\text{CO}} + 0.5$ , for guidance. The dotted line shows the same line, with a factor of  $+0.5$  added.

mass conversion factors for starburst and discs. Until accurate measurements of the CO 1–0 emission line over a statistical number of galaxies (both discs and SMGs), it will be difficult to solve this issue.

Although it is out of the scope of this paper to study these important differences, it is instructive to compare our CO 1–0 measurements with other galaxy populations. Fig. 15 compares the CO and IR luminosities of different galaxy populations including our detections in the cluster field. We do not convert CO luminosities to molecular gas masses given the large potential uncertainties related to  $\alpha_{\text{CO}}$  conversion factor across different galaxy populations. For the local Universe, we compiled measurements of typical spiral galaxies (Leroy et al. 2008) and local ULIRGs (Solomon et al. 1997). Recent CO measurements of massive star-forming galaxies at  $z \sim 0.4$  (Geach et al. 2011),  $z \sim 1.5$  (Daddi et al. 2010a; Aravena et al. 2010) and  $z = 1-2$  (Tacconi et al. 2010) are also shown, as well as CO measurements of four lensed star-forming galaxies at  $z = 2-3$  that have intrinsic properties similar to  $z \sim 1-2$  discs (Riechers et al. 2010b; Frayer et al. 2011). Additionally, we have included observations of SMGs and IR luminous quasar host galaxies from the literature (Greve et al. 2005; Solomon & Vanden Bout 2005; Iono et al. 2006; Weiß et al. 2007; Aravena et al. 2008; Coppin et al. 2008, 2010; Frayer et al. 2008; Schinnerer et al. 2008; Carilli et al. 2010, 2011; Riechers et al. 2006, 2010a, 2011a;

Ivion et al. 2011; Riechers et al. 2011b; Riechers 2011; Fu et al. 2012).<sup>1</sup>

The SFE can be defined as  $\text{SFE} = L_{\text{IR}}/L'_{\text{CO}}$  in units of  $L_{\odot} (\text{K km s}^{-1} \text{pc}^2)^{-1}$ . For galaxies detected with *Herschel*, we directly use their estimate of the IR luminosity. For those galaxies with no *Herschel* detection, we adopt the SED fitting derived SFR and convert them into IR luminosities following the relation of Kennicutt (1998). The obtained SFE values are shown in Table 2. For the CO detected galaxies, the SFE ranges between 20 and 75  $L_{\odot} (\text{K km s}^{-1} \text{pc}^2)^{-1}$ .

Fig. 15 shows that the SFE from the galaxies in our sample are overall consistent with the general population of star-forming galaxies at high redshifts, which range between 30 and 180  $L_{\odot} (\text{K km s}^{-1} \text{pc}^2)^{-1}$  (Aravena et al. 2010; Daddi et al. 2010a; Tacconi

<sup>1</sup> In the case of the Greve et al. (2005) SMG objects, we recomputed the IR luminosities by considering an optically thin, single-component grey-body dust model of the form  $S_{\nu} \propto \nu^{\beta} B_{\nu}(T_d) M_d$ , with a dust temperature of 37 K and  $\beta = 1.5$ , typical of star-forming SMGs (Kovács et al. 2006), constrained by the source's redshift and 350 GHz flux densities. This implies IR luminosities approximately two times lower than reported by Greve et al. (2005). For detections made only in a few high- $J$  CO transitions ( $J > 1$ ), with no CO excitation models available, we adopt line temperature ratios:  $R_{31} \sim R_{41} \sim 0.5$  and  $R_{21} \sim 0.8$  (Ivion et al. 2011; Riechers 2011).

et al. 2010); however, the significant uncertainties in our measurements make it difficult to draw further conclusions. On the other hand, the agreement between the SFE of ID 51207 and ID 51380 with typical high-redshift galaxies gives fundamental support to the identification of those objects as CO line emitters.

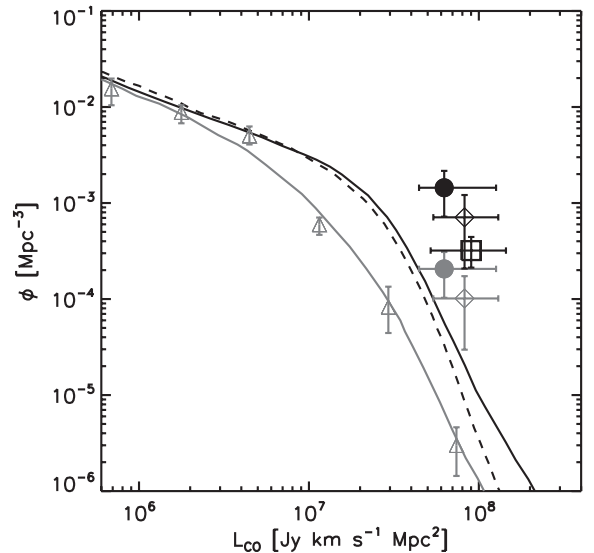
As mentioned before, the optical source ID 51861 has an optical spectroscopic redshift of 1.240 although it is wrongly identified with a line peak. In the absence of a spectroscopic redshift, it would be identified with CO 1–0 at  $z = 1.497$ . This source is not detected at 24  $\mu\text{m}$  and hence, by definition, not detected with *Herschel* since we are using the 24  $\mu\text{m}$  prior *Herschel* catalogue. It is interesting to note that if we had identified this galaxy as a CO emitter at the respective redshift, the SFR obtained from SED fitting of  $10 M_{\odot} \text{ yr}^{-1}$  would have implied an SFE of  $\sim 4 L_{\odot} (\text{K km s}^{-1} \text{ pc}^2)^{-1}$ . This would have been lower than the ones measured in local spiral galaxies, which are typically in the range  $10\text{--}100 L_{\odot} (\text{K km s}^{-1} \text{ pc}^2)^{-1}$  (Leroy et al. 2008), yet still consistent with that found in local elliptical galaxies, in the range  $\sim 0\text{--}50 L_{\odot} (\text{K km s}^{-1} \text{ pc}^2)^{-1}$  (Shapiro et al. 2010; Crocker et al. 2011). If we did not have an optical spectroscopic determination of the redshift, such misidentification would have still been suspicious taking into account such low SFE and the overall multi-wavelength properties of the host galaxy.

#### 4.2 Comparison to the predicted CO luminosity function at $z = 2$

One of the major motivations to perform blind deep CO surveys of the sky is to measure possible evolutionary trends in the amount of molecular gas with redshift and CO luminosity (or gas mass). An important tool to do this is to estimate the CO luminosity function at different redshifts. Combining results from the Millennium simulation (Springel et al. 2005; De Lucia & Blaizot 2007) and empirical, detailed models of abundances of molecular gas, and their relation to CO intensities, Obreschkow et al. (2009) made predictions for the luminosity function of the CO emission lines as a function of redshift and CO rotational transitions. In this section, we measure the space density of CO detected galaxies within the physical volume covered by our observations, and compare this with the values expected from the predictions (Obreschkow et al. 2009) and with previous observations of massive star-forming galaxies at  $z \sim 1.5$  (Daddi et al. 2010a).

To estimate the space density implied by our four CO detections, we start by computing the CO luminosity in units of  $\text{Jy km s}^{-1} \text{ Mpc}^2$  as  $L^V = (1+z)^{-1} 4\pi D_L^2 S^V$  (adopting the terminology presented in appendix A of Obreschkow et al. 2009), where  $z$  is the redshift,  $D_L$  is the luminosity distance in Mpc, and  $S^V$  is the velocity-integrated CO intensity in units of  $\text{Jy km s}^{-1}$ . From our four detections, we estimate a weighted average CO luminosity of  $(6.3 \pm 1.6) \times 10^7 \text{ Jy km s}^{-1} \text{ Mpc}^2$ . Next, we determine the cosmological volume covered by our observations, considering the area comprised by our JVLA field of view ( $\approx 60 \times 60 \text{ arcsec}^2$ ) and the redshift coverage,  $z = 1.478\text{--}1.591$ . This leads to a volume of  $\Delta V = 356 \text{ Mpc}^3$ . With this, we compute the space density of CO sources in units of  $\text{Mpc}^{-3} \text{ dex}^{-1}$  as  $\phi_0 = N/(\Delta V \log_{10} L_{\text{CO}})$ , where  $N = 4$  is the number of CO detected galaxies (Fig. 16).

We also compute the space density of CO emitters implied by the sample of six massive star-forming BzK galaxies that were reliably detected in CO 2–1 line emission by Daddi et al. (2010a). These are typical massive galaxies with an average IR luminosity of  $\sim 2 \times 10^{12} L_{\odot}$ . For this, we follow the procedure used by Obreschkow & Rawlings (2009), but we adopt more recent developments to our analysis, including the use of six BzK galaxies available instead of



**Figure 16.** Predicted cosmic evolution of the space density of CO 1–0 emitting galaxies as a function of CO 1–0 luminosity (CO luminosity function) at redshifts  $z = 0$  (grey solid line),  $z = 1$  (black dashed line) and  $z = 2$  (Obreschkow et al. 2009, black solid line;). The grey open triangles show the space density of CO emitters measured in the local Universe (Keres et al. 2003). The black filled circle shows the space density derived from our four CO detections in the overdense field targeted with JVLA. The grey filled circle shows the measurement but decreased by 7 to correct for the overdensity. The black and grey open diamonds represent the space density obtained considering only the two spectroscopically confirmed galaxies uncorrected and corrected by the 7 times factor, respectively. The black open square shows the estimate of space density of CO emitters derived from the six BzK star-forming galaxies at  $z \sim 1.5$  (Daddi et al. 2010a).

only two from Daddi et al. (2008). For each object, we compute its CO 2–1 luminosity directly from its redshift and measured CO line intensity presented by Daddi et al. (2010a). We convert the CO 2–1 luminosities (in  $\text{Jy km s}^{-1} \text{ Mpc}^2$ ) into CO 1–0 luminosities by assuming that both transitions are typically in local thermodynamic equilibrium (LTE) in BzK galaxies, and therefore scaling approximately as  $v^2$  (Aravena et al. 2010). Thereby, we compute the weighted average CO 1–0 luminosity for the sample. Following Obreschkow & Rawlings (2009), we approximate the space density of CO sources as the space density of IR sources at  $L_{\text{IR}} \approx 2 \times 10^{12} L_{\odot}$ , which corresponds to the average IR luminosity for all six objects. For typical galaxies at this IR luminosity level and in the redshift range  $z = 1.2\text{--}2.0$ , Rodighiero et al. (2010) find a space density  $\Phi_{\text{IR}} = 3.2_{-0.5}^{+0.6} \times 10^{-4} \text{ Mpc}^{-3}$  per unit  $\log_{10} L_{\text{IR}}$ , which we scale to  $\log_{10} L_{\text{CO}}$  to find the space density of CO sources (Fig. 16). We selected only this sample of massive star-forming galaxies at high redshift, with respect to the sample from Tacconi et al. (2010), because (1) all of them were detected in CO 2–1 with high significance; (2) they have similar redshifts compared to our CO sources and (3) three of these sources correspond to the only ‘normal’ objects so far detected in CO 1–0 emission, making a determination of line ratios between the 2–1 and 1–0 transitions more direct and straightforward. We remark, however, that this method to estimate the space density of CO emitters is limited by two important assumptions: the main one that the space density of CO emitters is directly traced by the space density of IR sources at a given IR luminosity does not take into account that there appears to be different star formation laws for bright starbursts and the general population of galaxies (Daddi et al. 2010b, see the previous section;). Without



the knowledge of the nature of individual sources in the IR sample from where we adopt the space density, it is difficult to estimate the uncertainties introduced by this assumption. Furthermore, the six BzK galaxies were selected to be massive,  $K$ -band selected, galaxies with significant 1.4 GHz radio detections, and thus not strictly IR-selected as it is assumed above although all six sources share similar IR luminosities. The actual density of such BzK sources is thus likely lower than the space density of IR sources in the field. Hence, this procedure should be taken with caution and only for comparison purposes.

Fig. 16 shows the space density of CO sources as a function of the average CO 1–0 luminosity obtained for our covered field as well as the space density of CO sources from the six BzK galaxies of Daddi et al. (2010a), compared to the predictions from Obreschkow et al. (2009) for  $z = 0$ ,  $z = 1$  and  $z = 2$  and observations of local galaxies by Keres et al. (2003). Similar to the findings of Obreschkow et al. (2009), the space density of CO sources derived from the BzK galaxies is only marginally consistent with the one predicted by the simulations. Furthermore, the space density obtained for the CO sources in our field appears to be in excess from that predicted in the simulations and from that obtained for the BzK sample. This result comes naturally from the fact that our observations likely target an overdensity of galaxies at  $z \sim 1.5$ . If we correct the  $\sim 7$  times increase factor due to the overdense field, we obtain a value in agreement, within the uncertainties, with what is measured from the BzK galaxies and marginally consistent with expectations from simulations. Similarly, if we take into account only the two spectroscopically confirmed CO sources in our field, the space density and average CO luminosity tend to agree better with the estimate obtained from the BzK galaxies. The apparent offset between measurements and the predictions from simulations could be explained by several reasons or a combination of them, for instance: (a) lack of a numerous sample of CO sources; (b) although the Obreschkow et al. model assumes a galactic CO luminosity to gas mass conversion factor, the use of different values could produce a better agreement between predictions and observations and (c) source-to-source variations in the line ratios, e.g. between 2–1 and 1–0. These results exemplify the need to perform measurements of CO emission, particularly CO 1–0, in a significant sample of galaxies (ideally in a contiguous field) selected based on their IR luminosities, in order to constrain the evolution of the CO luminosity function and thereby models of galaxy formation and evolution.

### 4.3 Future searches for blind CO line emission

The determination of redshifts for galaxies based on (sub)millimetre and radio wavelength observations have been focused on the IR brightest sources, favoured by the expanded bandwidth of such facilities. Based on the relationship between IR and CO luminosities, an IR bright galaxy, such as an SMG, is likely to also have bright CO emission. This facilitates a high significance ‘blind’ CO emission line detection along the line of sight, leading to an accurate redshift measurement. In such studies, the position of their targets is known a priori, usually derived from large blank-field IR/submm surveys, permitting to spatially guide the CO observations, being thus not really ‘blind’ CO detections (Weiß et al. 2009; Lestrade et al. 2010; Lupu et al. 2010; Frayer et al. 2011; Cox et al. 2011; Riechers et al. 2011a; Scott et al. 2011; Combes et al. 2012). However, serendipitous CO line detections, where the locations and redshifts of the gas-rich galaxies were not anticipated, have been reported (Daddi et al. 2009a,b; Lestrade et al. 2010).

Blind spectroscopic imaging of the sky with large bandwidths has a huge potential for discovery of gas-rich, optically and IR faint galaxies; however they require deep integrations to ensure significant emission line detections, at the  $\sim 10\sigma$  level, and unequivocally identify the galaxies and their redshifts. In the absence of such high signal-to-noise ratio detections, observations need to be guided by well-known optical, IR or radio positions and by accurate photometric redshifts. As shown in this work, focused line observations of clustered fields at high redshift have the advantage to increase the likelihood of finding gas emission using a limited bandwidth. This approach reduces the required observing time compared to purely blank-fields, where besides the need to cover a substantial area of the sky, it is necessary either to cover a reasonable range in frequency (e.g. a full 3 mm band for ALMA, a full  $K$  or  $Q$  band with JVLA) in order to contain emission lines at different redshifts, or to perform ‘spot-checks’ at a given redshift.

## 5 SUMMARY AND CONCLUDING REMARKS

In this work, we have presented deep CO 1–0 line observations of galaxies located in a galaxy cluster candidate at  $z = 1.5$  using the JVLA. The candidate cluster was identified using the red-sequence technique and is associated with an overdensity of approximately seven times of star-forming galaxies. We use the spatial clustering and expanded bandwidth of the JVLA to simultaneously observe the CO emission from four galaxies with available optical spectroscopic redshifts in a single pointing and frequency setting.

We detect, at the  $\sim 3\sigma$  and  $\sim 4\sigma$  level, the CO 1–0 emission line from two of the galaxies with available spectroscopic redshifts: ID 51613 and ID 51858 at  $z = 1.516$  and  $z = 1.556$ , respectively. We find  $L'_{\text{CO}} = (3.9 \pm 1.1) \times 10^{10} \text{ K km s}^{-1} \text{ pc}^2$  and  $L'_{\text{CO}} = (1.3 \pm 0.4) \times 10^{10} \text{ K km s}^{-1} \text{ pc}^2$ , respectively. Both galaxies are also detected with *Spitzer* at 24  $\mu\text{m}$ , and with *Herschel* at 250  $\mu\text{m}$  and 350  $\mu\text{m}$ . While modelling of their dust properties indicates total IR luminosities of  $5.7 \times 10^{11} L_{\odot}$  and  $9.5 \times 10^{11} L_{\odot}$ , respectively, characterization of their multi-wavelength SEDs suggests both are young star-forming galaxies that have formed a significant fraction of their stellar content, with stellar masses of  $4.5 \times 10^{10} M_{\odot}$  and  $6.0 \times 10^{10} M_{\odot}$ , respectively.

We performed a blind search for significant ( $>4\sigma$ ) emission line peaks in the JVLA data cube around the position of optical sources that were selected to have photometric redshift in the range  $z = 1.2$ – $1.8$  and limited to  $K_s < 23.5$ . This selection criterion ensures an accurate photometric redshift, while selecting galaxies with stellar masses  $> 2 \times 10^9 M_{\odot}$ . We find that two of these selected optical galaxies are associated with significant emission line peaks ( $>4\sigma$ ), which are thus identified as CO 1–0 line emission candidates. Both galaxies, ID 51207 and ID 51380, are found to have photometric redshifts in the range 1.4–1.6. Based on Monte Carlo simulations of the distribution of such emission line peaks in the field, we find that any optical galaxy that follows our selection criteria and is located within 1 arcsec from a candidate emission line peak is statistically unlikely to be associated with such peak by chance. In the case of ID 51207, such probability is 3.7 per cent while for ID 51380 we find 10 per cent. Using in parallel a Bayesian inference approach to select emission line peaks in the data cube, we recover both CO-emitting candidate sources. Here, the line identified with ID 51380 is found to have a probability of 70 per cent of being a CO emission line; however the line identified with ID 51207 is found to have a rather low probability of 13 per cent.

We find CO-based spectroscopic redshifts of 1.530 and 1.551 with  $L'_{\text{CO}} = (1.03 \pm 0.25) \times 10^{10} \text{ K km s}^{-1} \text{ pc}^2$  and  $L'_{\text{CO}} = (1.12 \pm$

$0.26) \times 10^{10} \text{ K km s}^{-1} \text{ pc}^2$  for ID 51207 and ID 51380, respectively. These galaxies, ID 51207 and ID 51380, are detected at  $24 \mu\text{m}$  and  $250 \mu\text{m}$  with *Spitzer* and *Herschel*. Such measurements lead to IR luminosities of  $4.9 \times 10^{11} L_{\odot}$  and  $3.3 \times 10^{11} L_{\odot}$  for ID 51207 and ID 51380, respectively. In the former case, its optical/IR SED suggests a  $\sim 1$  Gyr old, very massive star-forming galaxy, with a stellar mass of  $1.1 \times 10^{11} M_{\odot}$ , while for ID 51380 the SED indicates that it corresponds to a young star-forming galaxy, with a stellar mass of  $2.8 \times 10^{10} M_{\odot}$ .

In one case, we associated a line peak candidate with an optical source that had a previous optical spectroscopic redshift. This secure optical redshift of  $z = 1.240$  is incompatible with the one that would be derived from the identification of the line peak with the CO 1–0 emission line. This optical source fits well within our source selection criteria,  $K < 23.5$  (AB) and  $z_{\text{phot}} = 1.2\text{--}1.8$ ; however if we had identified it with the CO line emission, the non-detection in the IR bands and its implied SFR from the SED fitting method would have implied a very low SFE. We argue that in the absence of high-significance line detections, tight restrictions should be imposed on sources to be identified with CO line emission, such as detection in the IR bands or a lower limit in SFRs.

We measured the space density of CO galaxies compared to the space density of CO emitters estimated from the six BzK galaxies significantly detected in CO emission by Daddi et al., and compared to predictions from semi-analytic simulations. Overall, we find that all observations are only roughly consistent with the simulations, despite the low number of detections of typical star-forming galaxies at high-redshift. Clearly, observations of molecular gas from a statistically significant sample of these galaxies are necessary to measure the evolution of CO luminosity function with redshift, and thus constrain models of galaxy formation and evolution. We conclude by discussing the advantages of performing deep CO observations of star-forming galaxies in clustered fields compared to blank-fields in the sky.

## ACKNOWLEDGMENTS

We thank the anonymous referee for the comments and suggestions that helped to improve this manuscript. MA and this work were co-funded under the Marie Curie Actions of the European Commission (FP7-COFUND). CC thanks the Kavli Institute for Cosmology for their hospitality. Based on observations obtained, within the COSMOS Legacy Survey, the National Radio Astronomy Observatory JVLA, CFHT, Subaru, KPNO, Cerro Tololo Inter-American Observatory (CTIO), and ESO Observatories. The National Radio Astronomy Observatory is a facility of the National Science Foundation (NSF), operated under cooperative agreement by Associated Universities Inc.

## REFERENCES

Aravena M. et al., 2008, *A&A*, 491, 173  
 Aravena M. et al., 2010, *ApJ*, 718, 177  
 Bielby R. M. et al., 2010, *A&A*, 523, A66  
 Bolzonella M., Miralles J.-M., Pelló R., 2000, *A&A*, 363, 476  
 Bondi M., Ciliegi P., Schinnerer E., Smolčić V., Jahnke K., Carilli C., Zamorani G., 2008, *ApJ*, 681, 1129  
 Bothwell M. S. et al., 2010, *MNRAS*, 405, 219  
 Bouwens R. J., Illingworth G. D., Franx M., Ford H., 2007, *ApJ*, 670, 928  
 Brandt J. C., 1960, *ApJ*, 131, 293  
 Bruzual G., Charlot S., 2003, *MNRAS*, 344, 1000  
 Calzetti D., Armus L., Bohlin R. C., Kinney A. L., Koornneef J., Storchi-Bergmann T., 2000, *ApJ*, 533, 682

Capak P. et al., 2007, *ApJS*, 172, 99  
 Carilli C. L. et al., 2010, *ApJ*, 714, 1407  
 Carilli C. L., Hodge J., Walter F., Riechers D., Daddi E., Dannerbauer H., Morrison G. E., 2011, *ApJ*, 739, L33  
 Combes F. et al., 2012, *A&A*, 538, L4  
 Coppin K. E. K. et al., 2008, *MNRAS*, 389, 45  
 Coppin K. E. K. et al., 2010, *MNRAS*, 407, L103  
 Cowie L. L., Songaila A., Barger A. J., 1999, *AJ*, 118, 603  
 Cox P. et al., 2011, *ApJ*, 740, 63  
 Crocker A. F., Bureau M., Young L. M., Combes F., 2011, *MNRAS*, 410, 1197  
 Daddi E. et al., 2007, *ApJ*, 670, 156  
 Daddi E., Dannerbauer H., Elbaz D., Dickinson M., Morrison G., Stern D., Ravindranath S., 2008, *ApJ*, 673, L21  
 Daddi E., Dannerbauer H., Krips M., Walter F., Dickinson M., Elbaz D., Morrison G. E., 2009a, *ApJ*, 695, L176  
 Daddi E. et al., 2009b, *ApJ*, 694, 1517  
 Daddi E. et al., 2010a, *ApJ*, 713, 686  
 Daddi E. et al., 2010b, *ApJ*, 714, L118  
 Dannerbauer H., Walter F., Morrison G., 2008, *ApJ*, 673, L127  
 Dannerbauer H., Daddi E., Riechers D. A., Walter F., Carilli C. L., Dickinson M., Elbaz D., Morrison G. E., 2009, *ApJ*, 698, L178  
 De Lucia G., Blaizot J., 2007, *MNRAS*, 375, 2  
 Dekel A. et al., 2009, *Nat*, 457, 451  
 Dressler A., 1980, *ApJ*, 236, 351  
 Feroz F., Hobson M. P., 2008, *MNRAS*, 384, 449  
 Finoguenov A. et al., 2010, *MNRAS*, 403, 2063  
 Förster Schreiber N. M. et al., 2009, *ApJ*, 706, 1364  
 Frayer D. T. et al., 2008, *ApJ*, 680, L21  
 Frayer D. T. et al., 2011, *ApJ*, 726, L22  
 Fu H. et al., 2012, *ApJ*, 753, 134  
 Geach J. E., Smail I., Moran S. M., MacArthur L. A., Lagos C. d. P., Edge A. C., 2011, *ApJ*, 730, L19  
 Genzel R. et al., 2010, *MNRAS*, 407, 2091  
 Gialalisco M. et al., 2004, *ApJ*, 600, L103  
 Greve T. R. et al., 2005, *MNRAS*, 359, 1165  
 Guzzo L. et al., 2007, *ApJS*, 172, 254  
 Ilbert O. et al., 2009, *ApJ*, 690, 1236  
 Iono D. et al., 2006, *PASJ*, 58, 957  
 Ivison R. J. et al., 2004, *ApJS*, 154, 124  
 Ivison R. J., Papadopoulos P. P., Smail I., Greve T. R., Thomson A. P., Xilouris E. M., Chapman S. C., 2011, *MNRAS*, 412, 1913  
 Kennicutt R. C., Jr, 1998, *ARA&A*, 36, 189  
 Keres D., Yun M. S., Young J. S., 2003, *ApJ*, 582, 659  
 Kereš D., Katz N., Weinberg D. H., Davé R., 2005, *MNRAS*, 363, 2  
 Kovács A., Chapman S. C., Dowell C. D., Blain A. W., Ivison R. J., Smail I., Phillips T. G., 2006, *ApJ*, 650, 592  
 Kruegel E., Siebenmorgen R., 1994, *A&A*, 288, 929  
 Lacy M. et al., 2004, *ApJS*, 154, 166  
 Lagos C. D. P., Baugh C. M., Lacey C. G., Benson A. J., Kim H.-S., Power C., 2011, *MNRAS*, 418, 1649  
 Leroy A. K., Walter F., Brinks E., Bigiel F., de Blok W. J. G., Madore B., Thornley M. D., 2008, *AJ*, 136, 2782  
 Lestrade J.-F., Combes F., Salomé P., Omont A., Bertoldi F., André P., Schneider N., 2010, *A&A*, 522, L4  
 Lidman C. et al., 2008, *A&A*, 489, 981  
 Lilly S. J., Le Fevre O., Hammer F., Crampton D., 1996, *ApJ*, 460, L1  
 Lilly S. J. et al., 2007, *ApJS*, 172, 70  
 Lilly S. J. et al., 2009, *ApJS*, 184, 218  
 Lupu R. E. et al., 2010, preprint (arXiv e-prints)  
 Lutz D. et al., 2011, *A&A*, 532, A90  
 Madau P., Ferguson H. C., Dickinson M. E., Gialalisco M., Steidel C. C., Fruchter A., 1996, *MNRAS*, 283, 1388  
 Magdis G. E. et al., 2011, *ApJ*, 740, L15  
 Miley G., De Breuck C., 2008, *A&AR*, 15, 67  
 Nguyen H. T. et al., 2010, *A&A*, 518, L5  
 Obreschkow D., Rawlings S., 2009, *ApJ*, 696, L129

- Obreschkow D., Heywood I., Klöckner H.-R., Rawlings S., 2009, *ApJ*, 702, 1321
- Oliver S. J. et al., 2010, *A&A*, 518, L21
- Oliver S. J. et al., 2012, preprint (arXiv e-prints)
- Ouchi M. et al., 2004, *ApJ*, 611, 660
- Perley R. A., Chandler C. J., Butler B. J., Wrobel J. M., 2011, *ApJ*, 739, L1
- Riechers D. A., 2011, *ApJ*, 730, 108
- Riechers D. A. et al., 2006, *ApJ*, 650, 604
- Riechers D. A. et al., 2010a, *ApJ*, 720, L131
- Riechers D. A., Carilli C. L., Walter F., Momjian E., 2010b, *ApJ*, 724, L153
- Riechers D. A. et al., 2011a, *ApJ*, 733, L12
- Riechers D. A., Hodge J., Walter F., Carilli C. L., Bertoldi F., 2011b, *ApJ*, 739, L31
- Rodighiero G. et al., 2010, *A&A*, 515, A8
- Rodighiero G. et al., 2011, *ApJ*, 739, L40
- Salvato M. et al., 2009, *ApJ*, 690, 1250
- Salvato M. et al., 2011, *ApJ*, 742, 61
- Schinnerer E. et al., 2007, *ApJS*, 172, 46
- Schinnerer E. et al., 2008, *ApJ*, 689, L5
- Schinnerer E. et al., 2010, *ApJS*, 188, 384
- Scott K. S. et al., 2011, *ApJ*, 733, 29
- Scoville N. et al., 2007, *ApJS*, 172, 1
- Shapiro K. L. et al., 2010, *MNRAS*, 402, 2140
- Smolčić V., Riechers D. A., 2011, *ApJ*, 730, 64
- Smolčić V. et al., 2009, *ApJ*, 690, 610
- Solomon P. M., Vanden Bout P. A., 2005, *ARA&A*, 43, 677
- Solomon P. M., Downes D., Radford S. J. E., Barrett J. W., 1997, *ApJ*, 478, 144.
- Spergel D. N. et al., 2007, *ApJS*, 170, 377
- Springel V. et al., 2005, *Nat*, 435, 629
- Steidel C. C., Adelberger K. L., Giavalisco M., Dickinson M., Pettini M., 1999, *ApJ*, 519, 1
- Stern D. et al., 2005, *ApJ*, 631, 163
- Tacconi L. J. et al., 2010, *Nat*, 463, 781
- Tanaka M., Finoguenov A., Ueda Y., 2010, *ApJ*, 716, L152
- Weiß A., Downes D., Neri R., Walter F., Henkel C., Wilner D. J., Wagg J., Wiklind T., 2007, *A&A*, 467, 955
- Weiß A., Ivison R. J., Downes D., Walter F., Cirasuolo M., Menten K. M., 2009, *ApJ*, 705, L45
- Wilson G. et al., 2009, *ApJ*, 698, 1943
- Wootten A., Thompson A. R., 2009, *IEEE Proc.*, 97, 1463

This paper has been typeset from a  $\text{\LaTeX}$  file prepared by the author.